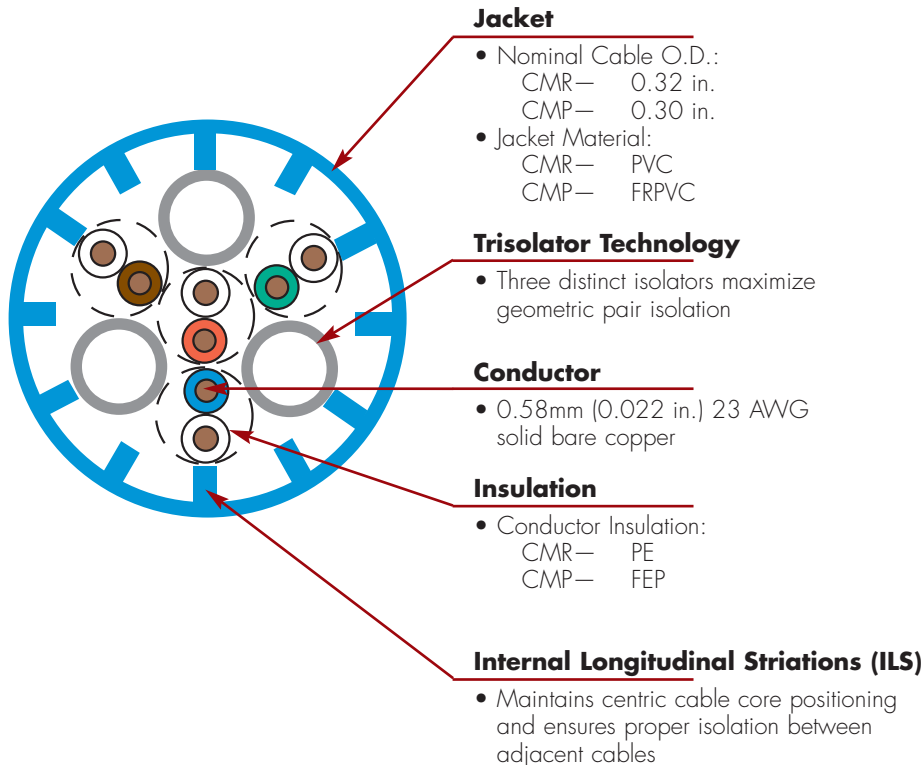
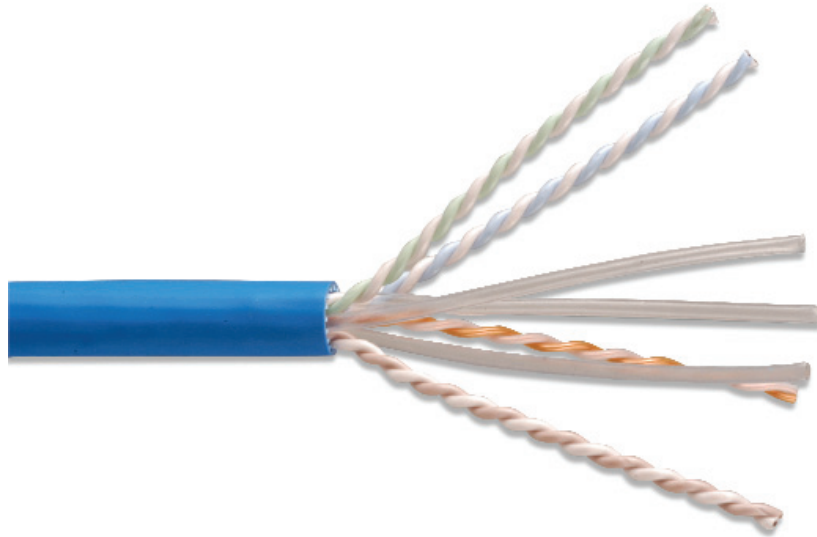


CATEGORY 6A™ UTP CABLE - US

Siemon's next generation category 6A UTP cable uses an innovative cable construction which results in a smaller, more flexible design. The cable uses Siemon's new Trisolator™ technology in conjunction with Internal Longitudinal Striation (ILS™) jacket construction to reduce alien crosstalk (AXT) coupling between adjacent cables.



CABLE — US



CONSTRUCTION

- Reverse sequential numbering
- Round compact design jacket
- Jacket material is lead free

PACKAGING

- 1000 ft. reel
- Weight:
CMR— 44 lbs/1000 ft.
CMP— 45 lbs/1000 ft.

STANDARDS COMPLIANCE

- ANSI/TIA-568-C.2
- IEC 61156-5 Ed 2.0
- ISO/IEC 11801 Ed 2.2
- UL CMR and CSA FT4
- UL CMP and CSA FT6

ETHERNET APPLICATIONS SUPPORT

- 10GBASE-T • 1000BASE-T
- 100BASE-T • 10BASE-T

Supports all applications designed for category 6A or lower cabling

PRODUCT INFORMATION

Category 6A UTP Cable

ELECTRICAL SPECIFICATIONS

DC Resistance	<9.38 Ω/100m
DC Resistance Unbalance	3%
Mutual Capacitance	5.6 nF/100m
Capacitance Unbalance	<330 pF/100m
Characteristic Impedance (ohms)	1 - 100 MHz: 100 ± 15% 100 - 500 MHz: 100 ± 22%
NVP	CMP=67% CMR=66%
TCL	30-10log(f/100)dB
PSANEXT	62.5-15log(f/100)dB
PSAACRF	38.2-20log(f/100)dB
Delay Skew	≤ 45ns/100m
PoE	Suitable for PoE & PoE +

PHYSICAL PROPERTIES

	CMP	CMR
Pulling Tension (max)	110N (25 lbf)	110N (25 lbf)
Bend Radius (min)	4 x O.D. 30.5mm (1.2 in.)	4 x O.D. 32.5mm (1.28 in.)
Installation Temperature	0 to 50°C (+32 to 122°F)	0 to 50°C (+32 to 122°F)
Storage Temperature	-20 to 75°C (-4 to 167°F)	-20 to 75°C (-4 to 167°F)
Operating Temperature	-10 to 60°C (-14 to 140°F)	-20 to 60°C (-4 to 140°F)

TRANSMISSION PERFORMANCE

GUARANTEED WORST CASE
 SIEMON TYPICAL

Frequency (MHz)	Insertion Loss (dB)		NEXT (dB)		PS NEXT (dB)		ACR (dB)		PSACR (dB)		ACR-F (dB)		PS ACR-F (dB)		Return Loss (dB)		Propagation Delay (ns)	
1.0	2.1	1.8	75.3	86.0	73.3	82.3	73.2	84.2	71.2	80.5	73.3	91.0	71.3	85.0	20.0	33.0	570	570
4.0	3.8	3.4	66.3	77.0	64.3	73.3	62.5	73.6	60.5	69.9	61.3	79.0	59.3	73.0	23.0	35.5	552	552
10.0	5.9	5.4	60.3	71.0	58.3	67.3	54.4	65.6	52.4	61.9	53.3	71.0	51.3	65.0	25.0	38.0	545	545
16.0	7.5	6.9	57.2	68.0	55.2	64.2	49.8	61.1	47.8	57.3	49.2	67.0	47.2	61.0	25.0	35.2	543	543
20.0	8.4	7.7	55.8	67.0	53.8	62.8	47.4	59.3	45.4	55.1	47.3	65.0	45.3	59.0	25.0	35.0	542	542
31.25	10.5	9.9	52.9	64.0	50.9	59.9	42.4	54.1	40.4	50.0	43.4	61.0	41.4	55.0	23.6	33.1	540	540.4
62.5	15.0	14.3	48.4	59.0	46.4	55.4	33.4	44.7	31.4	41.1	37.4	55.0	35.4	49.0	21.5	32.2	539	538.6
100.0	19.1	18.1	45.3	56.0	43.3	52.0	26.2	37.9	24.2	33.9	33.3	51.0	31.3	45.0	20.1	31.6	538	537.6
200.0	27.6	27.3	40.8	52.0	38.8	47.8	13.2	24.7	11.2	20.5	27.3	45.0	25.3	39.0	18.0	29.8	537	536.5
250.0	31.1	31.1	39.3	50.0	37.3	46.0	8.3	18.9	6.3	14.9	25.3	43.0	23.3	37.0	17.3	28.7	536	536.3
300.0	34.3	35.0	38.1	49.0	36.1	45.0	3.9	14.0	-1.9	10.0	23.8	38.0	21.8	35.0	17.3	28.0	536	536.1
400.0	40.1	40.0	36.3	47.0	34.3	43.0	-3.8	7.0	-5.8	3.0	21.3	36.0	19.3	33.0	17.3	27.1	536	535.8
500.0	45.3	42.0	34.8	47.0	32.8	42.0	-10.4	5.0	-12.4	0.0	19.3	34.0	17.3	32.0	17.3	26.0	536	535.6
550.0*	-	43.0	-	46.0	-	42.0	-	3.0	-	-1.0	-	33.0	-	31.0	-	26.0	536	-
625.0*	-	44.9	-	46.0	-	41.0	-	1.1	-	-3.9	-	33.0	-	29.0	-	25.0	535	-
750.0*	-	49.0	-	45.0	-	41.0	-	-4.0	-	-8.0	-	32.0	-	27.0	-	25.0	535	-

*Performance for frequencies beyond TIA requirements are for information only.

All performance based on 100 meters (328 ft.).

Because we continuously improve our products, Siemon reserves the right to change specifications and availability without prior notice.

Category 6A Riser 4-Pair UTP Cable (CMR, CSA Type FT4):

9C6R4-A5-(XX)-R1A.....Riser, 1000 ft. Reel

Category 6A Plenum 4-Pair UTP Cable (CMP, CSA Type FT6):

9C6P4-A5-(XX)-R1A.....Plenum, 1000 ft. Reel

Use (XX) to specify jacket color: 01=black, 02 = white, 03 = red, 04 = gray, 05 = yellow, 06 = blue, 07 = green, 08 = violet, 09 =orange

Cable colors highlighted in red indicate FOCUS products which are readily available. Other colors may have extended lead times and minimum purchase requirements.

North America
Watertown, CT USA
Phone (1) 860 945 4200 US
Phone (1) 888 425 6165 Canada

Europe/Middle East/Africa
Surrey, England
Phone (44) 0 1932 571771

Asia/Pacific
Shanghai, P.R. China
Phone (86) 21 5385 0303

Latin America
Bogota, Colombia
Phone (571) 657 1950