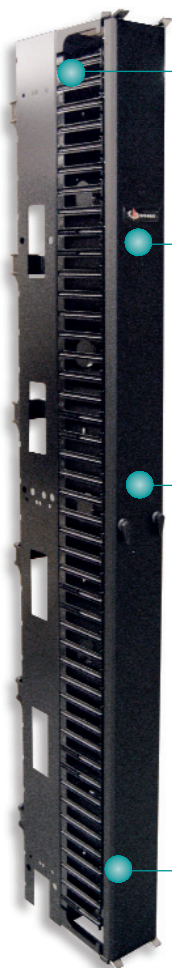


VPC VERTICAL PATCHING CHANNEL

Siemon's Vertical Patching Channel (VPC) sets a new standard for cable management systems by improving appearance, accessibility and cable routing on both the front and rear of the rack. Designed as a stand-alone manager to be mounted between adjacent racks the VPC features a full length, hinged door on the front to conceal patch cord routing. The rear manager is open for ready routing of large bundles of horizontal/backbone cabling. With its easy access design, high capacity and professional appearance, the VPC is ideal for both installers and end users alike.



VPC-6

Cable Access Holes allow cables to route easily between the front and rear of the channel

Available in standard 152mm version or new high capacity 304mm version

With an easy turn of a single knob, the full-length cover hinges in either direction to provide access to the entire vertical channel

Mounting holes on side of VPC provides compatibility with common 76mm and 152mm industry racking systems including Siemon's RS-07 and XLBET frames as well as Siemon's extended depth RS rack system*

Optional quarter-turn cable managers can be mounted within vertical channels for additional management such as segregation of application specific cords



VPC-12



Rear channel retainers can be hinged in either direction and are removable enabling relocation to any position along the rear vertical channel

The VPC is fully side stackable for use in ultra high density environments. The doors can be individually opened 60° or adjacent doors can be manually opened for full access

All of the cable routing points on the vertical channels are rounded to allow patch cords to seamlessly enter and exit the managers without risk of cable deformation

*When used with extended depth rack, rear channel is used for mounting purposes only.

ORDERING INFORMATION

VPC 6 Vertical Patching Channel:

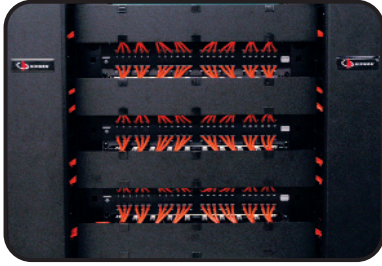
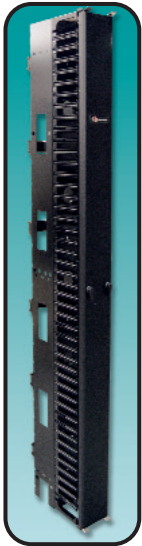
VPC-6 2.1m x 152mm vertical patching channel. Includes front cover, 6 rear channel retainers and mounting hardware

height: 2.1m
width: 152.4mm
depth: 304.8mm

VPC 12 Vertical Patching Channel:

VPC-12 2.1m x 305mm vertical patching channel. Includes front cover, 12 rear channel retainers and mounting hardware

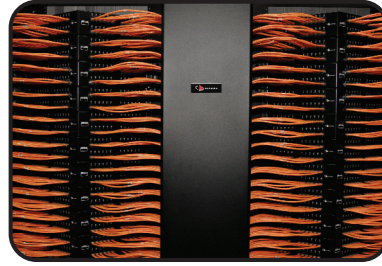
height: 2.1m
width: 304.8mm
depth: 304.8mm



Fully comprehensive cable management can be created using Siemon's RS-07 and RS Series horizontal cable managers



RS-07-S shown with two VPC-6's



VPC-12 shown with two RS-07-S racks and angled patch panels



CABLE MANAGER CAPACITY TABLE

PART NUMBER	CABLE DIAMETER (MM)										
	3.81	4.32	4.83	5.33	5.84	6.35	6.86	7.37	7.87	8.38	8.89
VPC-6 (Front)	975	759	607	497	414	351	301	260	228	201	179
VPC-6 (Rear)	1292	1006	805	659	549	465	399	345	302	267	237
VPC-12 (Front)	1980	1541	1234	1010	842	712	611	529	463	409	363
VPC-12 (Rear)	2584	2012	1610	1318	1098	930	798	690	604	534	474

The capacity table is provided for planning purposes. The values shown reflect a combination of actual and calculated capacity and represent a 100% fill. These values were derived using properly dressed cables and can be adversely affected by poor cable routing practices.

Because we continuously improve our products, Siemon reserves the right to change specifications and availability without prior notice.

For related product information request Spec Sheet(s):

RS Rack System (PROD-SS-SRS)
19 inch Cable Managers (PROD-SS-CBM)

Siemon — EMEA HQ & UK
United Kingdom
Tel: +44 (0) 1932 571771

Siemon — France
Paris
Tel: +33 1 46 46 11 85

Siemon — Deutschland
Frankfurt
Tel: +49 (0) 69 97168 184

Siemon — Italia
Milano
Tel: +39 (02) 64 672 209