

SCREENED BLADEPATCH® 5e

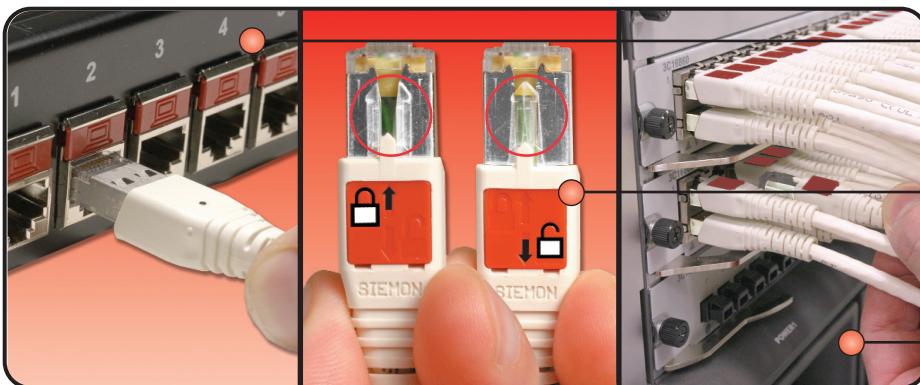
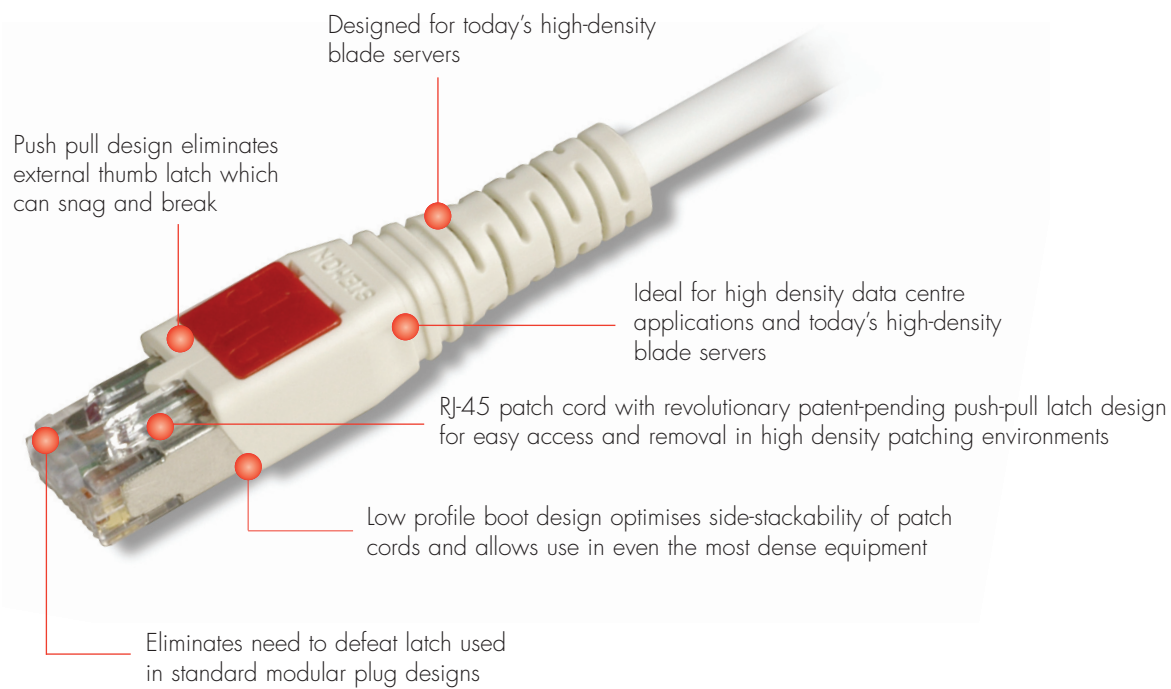
Siemon's new BladePatch patch cord offers a unique solution for high-density patching environments. It features an innovative push-pull boot design to control the latch, enabling easy access and removal of the cord in tight-fitting areas. The BladePatch cord is ideal for patching high density blade servers, patch panels, or any equipment with RJ-45 outlets.

All Siemon screened modular cords are assembled using premium stranded cable that meets all category 5e specifications. Choose Siemon screened BladePatch 5e patch cords for a perfectly matched, end-to-end channel solution with unparalleled performance.



PATENTED

PATCH CORDS, PLUGS & CABLE



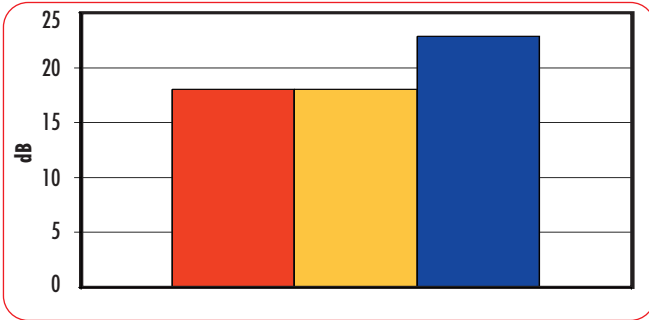
Fits within any standard RJ45 opening

Simply push the boot forward to latch into the outlet and pull back to release

The push-pull design enables easy access and removal in tight-fitting areas

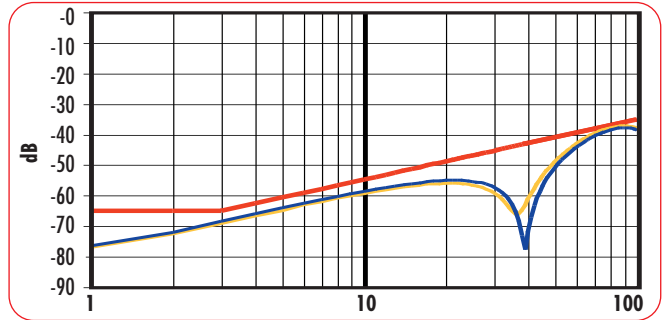
PRODUCT INFORMATION

Return Loss Performance



■ Limit
 ■ Worst Case
 ■ Typical

NEXT Performance



Screened BladePatch® 5e:

BP5S-(XX)M-(XX)L..... Category 5e Screened BladePatch, RJ45 patch cord with push-pull latching design, colour matching cord/boot, T568A/B, LSOH

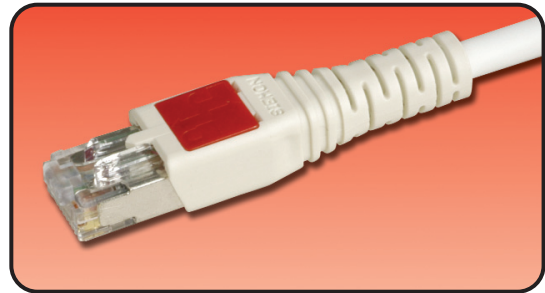
Use 1st (XX) to specify cord length:

01 = 1m, 02 = 2m, 03 = 3m, 05 = 5m

Use 2nd (XX) to specify colour:

01 = black, 02 = white, 03 = red, 04 = grey, 05 = yellow, 06 = blue, 07 = green, 09 = orange

ⓑ Add "B" for bulk project pack of 100 modular cords



Because we continuously improve our products, Siemon reserves the right to change specifications and availability without prior notice.

BladePatch® and MAX® are trademarks of Siemon

For related product information request Spec Sheet(s):
Screened MAX® 5e Modules (PROD-SS-MX5S)

Siemon — EMEA HQ & UK
 United Kingdom
 Tel: +44 (0) 1932 571771

Siemon — France
 Paris
 Tel: +33 1 46 46 11 85

Siemon — Deutschland
 Frankfurt
 Tel: +49 (0) 69 97168 184

Siemon — Italia
 Milano
 Tel: +39 (02) 64 672 209

WWW.SIEMON.COM

ISO 9001
CERTIFIED

ISO 14001
CERTIFIED

