

CATEGORY 6 CROSS-CONNECT WIRE

Siemon's Category 6 cross-connect wire is ideal for category 6 or category 5e cross-connect applications using S210® or S110® blocks. Channel performance exceeds category 6 out to 250 MHz.



CABLE

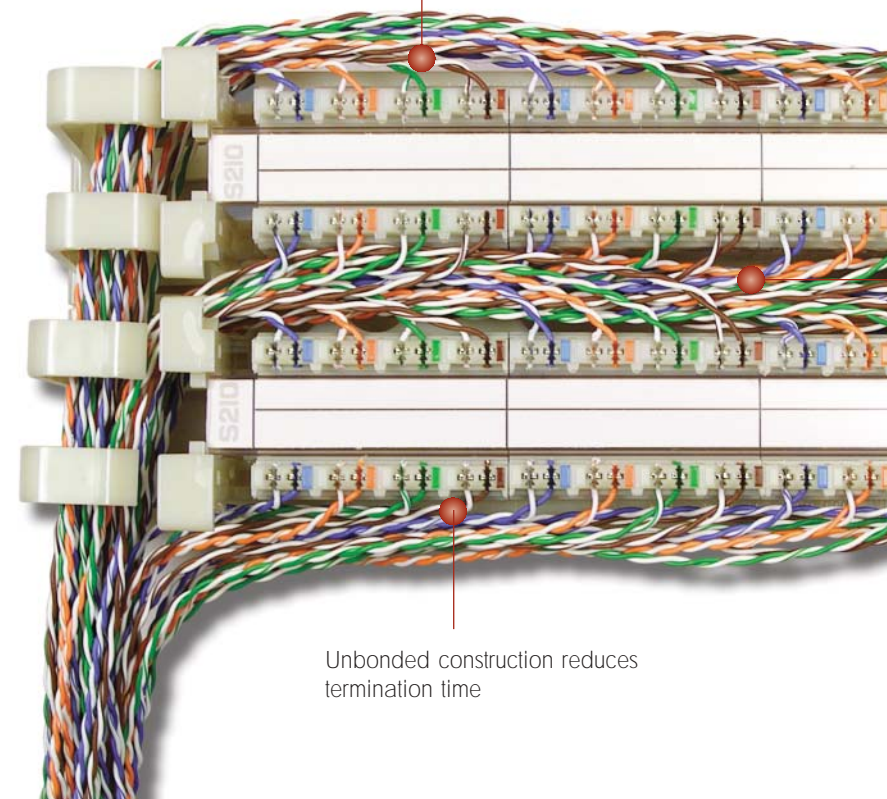
Exceeds category 6 channel requirements when used with Siemon S210 blocks

Cable Construction

- 0.5mm bare copper conductors
- 1.02mm insulation diameter (nominal)

Maximum cross-connect length of 5m allowed for category 6 installations

Unbonded construction reduces termination time



	<h3>Compliance</h3> <ul style="list-style-type: none">• ISO/IEC 11801:2002 2nd Edition (Class E)• TIA/EIA-568-B.2-1	
--	--	--

Siemon's cross-connect wire dispenser is designed to mount to standard EIA 482.6mm racks to facilitate quick and easy installation of cross-connect wire

Available in 305m spools

PRODUCT INFORMATION

CABLE

TRANSMISSION PERFORMANCE

TIA/EIA & ISO/IEC

SIEMON WORST CASE

Frequency (MHz)	Maximum Insertion Loss (dB/100m)		Minimum ELFEXT (dB/100m)		Minimum PS ELFEXT (dB/100m)		Minimum Return Loss (dB/100m)	
	TIA/EIA & ISO/IEC	SIEMON WORST CASE	TIA/EIA & ISO/IEC	SIEMON WORST CASE	TIA/EIA & ISO/IEC	SIEMON WORST CASE	TIA/EIA & ISO/IEC	SIEMON WORST CASE
1.0	2.0	2.0	67.8	67.8	64.8	64.8	20.0	20.0
2.0	2.7	2.7	61.8	61.8	58.8	58.8	21.5	21.5
4.0	3.8	3.8	55.8	55.8	52.8	52.8	23.0	23.0
10.0	6.0	6.0	47.8	47.8	44.8	44.8	25.0	25.0
16.0	7.6	7.6	43.7	43.7	40.7	40.7	25.0	25.0
20.0	8.5	8.5	41.8	41.8	38.8	38.8	25.0	25.0
31.25	10.7	10.7	37.9	37.9	34.9	34.9	23.6	23.6
62.5	15.4	15.4	31.9	31.9	28.9	28.9	21.5	21.5
100.0	19.8	19.8	27.8	27.8	24.8	24.8	20.1	20.1
125.0	22.4	22.4	25.9	25.9	22.9	22.9	19.4	19.4
160.0	25.6	25.1	23.7	23.7	20.7	20.7	18.7	18.7
175.0	26.9	29.9	22.9	22.9	19.9	19.9	18.4	18.4
200.0	29.0	29.0	21.8	21.8	18.8	18.8	18.0	18.0
250.0	32.8	32.8	19.8	19.8	16.8	16.8	17.3	17.3

All performance based on 100 meters

ELECTRICAL CHARACTERISTICS

Maximum DC Resistance (@ 20° C)	9.4 ohms/100m
Characteristic Impedance (no impedance averaging allowed)	1-100 MHz: 100 ohms ± 15% 100-250 MHz: 100 ohms ± 22%
Nominal Velocity of Propagation (NVP)	0.65

Category 6 Cross-Connect Wire:

CJ6-W4-10004-pair, 0.5mm, category 6 cross-connect wire, pair colours blue/orange/green/brown, 305m spool

Cross-Connect Wire Dispenser:

CWD-19482.6mm cross-connect wire dispenser

Because we are continuously improving our products, The Siemon Company reserves the right to change specifications and availability without prior notice. S210® and S110® are trademarks of The Siemon Company

For related product information request Spec Sheet(s):

S210® Wiring Block (PROD-SS-210)

S110® Wiring Block (PROD-SS-110)

Siemon — EMEA HQ & UK
United Kingdom
Tel: +44 (0) 1483 480040

Siemon — France
Paris
Tel: +33 1 46 46 11 85

Siemon — Deutschland
Frankfurt
Tel: +49 (0) 69 97168 184

Siemon — Italia
Milano
Tel: +39 (02) 64 672 209

WWW.SIEMON.COM

