

# BLADEPATCH™ 6 UTP

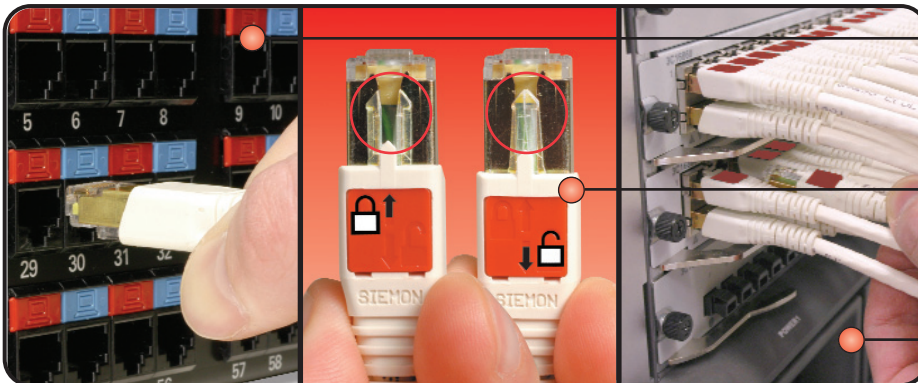
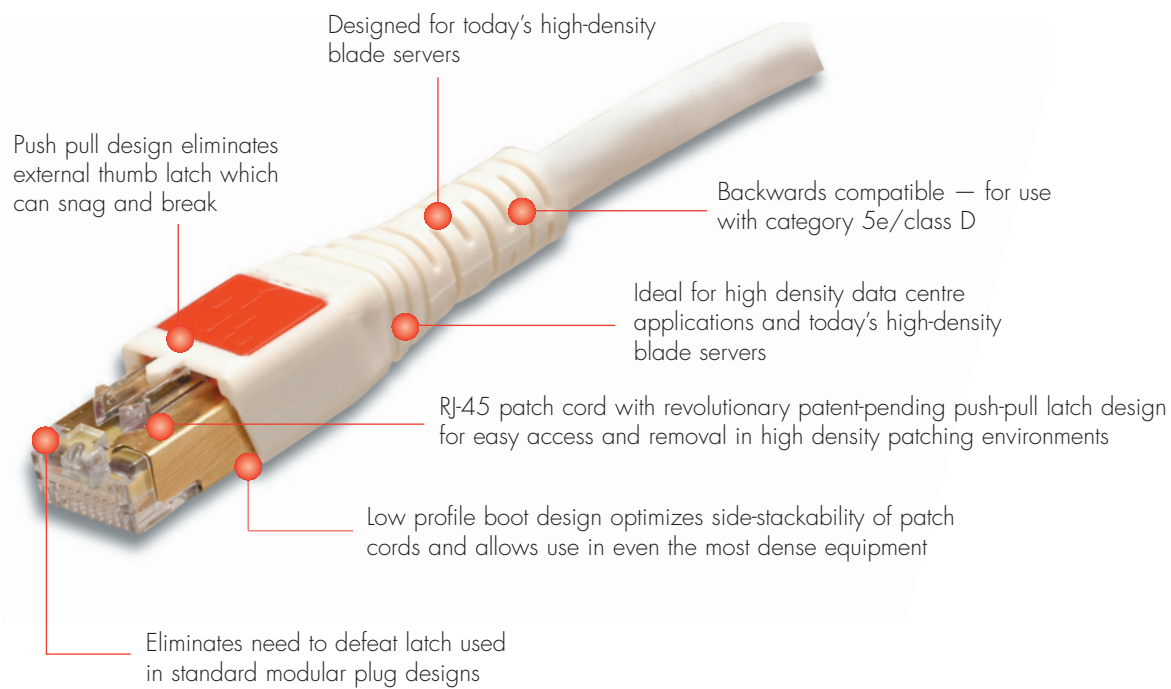
Siemon's new BladePatch patch cord offers a unique solution for high-density patching environments. It features an innovative push-pull boot design to control the latch, enabling easy access and removal of the cord in tight-fitting areas. The BladePatch cord is ideal for patching high density blade servers, patch panels, or any equipment with RJ-45 outlets.

Combine the BladePatch with Siemon's MAX® 6 modules and HD® 6 patch panels for a complete Category 6 channel solution. All Siemon BladePatch modular cords are assembled using premium stranded cable that meets all category 6 specifications. These cords are also backwards compatible with lower category connecting hardware.



PATENT PENDING

PATCH CORDS, PLUGS & CABLE



Fits within any standard RJ45 opening

Simply push the boot forward to latch into the outlet and pull back to release

The push-pull design enables easy access and removal via the boot in tight-fitting areas

# PRODUCT INFORMATION

## WORST CASE CABLE PERFORMANCE

### Siemon Category 6 Stranded Cable Specifications:

Cable used to manufacture BladePatch™ 6 UTP patch cords meets the specifications set forth by both ANSI/TIA/EIA-568-B.2-1 and ISO/IEC 11801:2002.

Specifying compliance to both '568 and '11801 ensures minimal cable impedance variation and superior BladePatch 6 return loss performance.

Frequency (MHz)	Maximum Attenuation (dB/100 m)	Power Sum Elfect Loss (dB)	Power Sum Next Loss (dB)
1 MHz	2.4	67.8	72.3
4 MHz	4.5	55.8	63.3
10 MHz	7.1	47.8	57.3
16 MHz	9.1	43.7	54.2
20 MHz	10.2	41.8	52.8
31.25 MHz	12.8	37.9	49.9
62.5 MHz	18.5	31.9	45.4
100 MHz	23.8	27.8	42.3
200 MHz	34.8	21.8	37.8
250 MHz	39.4	19.8	36.3

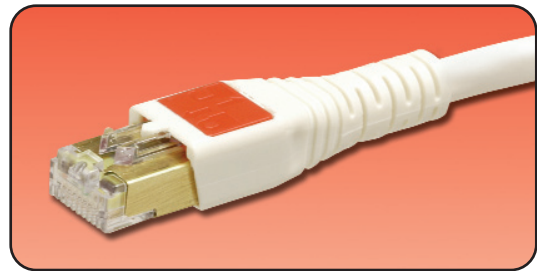
### BladePatch™:

BP6-(XX)M-(XX).....Category 6 UTP BladePatch, RJ45 patch cord with push-pull latching design, colour matching cord/boot, T568A/B

Use 1st (XX) to specify cord length:  
01 = 1m, 1.5 = 1.5m 02 = 2m, 03 = 3m, 05 = 5m, 7.5 = 7.5m\*

\*EMEA only

Use 2nd (XX) to specify colour:  
01 = black, 02 = white, 03 = red, 04 = grey, 05 = yellow, 06 = blue, 07 = green



ⓑ Add "B" for bulk project pack of 100 modular cords

Because we continuously improve our products, Siemon reserves the right to change specifications and availability without prior notice.

BladePatch™, MAX® and HD® are trademarks of Siemon

For related product information request Spec Sheet(s):

HD6 Patch Panels (PROD-SS-HD6)

System 6 Cable

for Siemon System cable and qualified cable ally part numbers visit [www.siemon.com/go/cableally](http://www.siemon.com/go/cableally)

Siemon — EMEA HQ & UK  
United Kingdom  
Tel: +44 (0) 1932 571771

Siemon — France  
Paris  
Tel: +33 1 46 46 11 85

Siemon — Deutschland  
Frankfurt  
Tel: +49 (0) 69 97168 184

Siemon — Italia  
Milano  
Tel: +39 (02) 64 672 209

WWW.SIEMON.COM

ISO 9001  
CERTIFIED

ISO 14001  
CERTIFIED

