

HD5® PATCH PANEL

The HD5 series patch panels offer the most robust patching solution in the industry. HD5 panels with universal T568A/B wiring significantly exceed category 5e requirements with component and channel performance to 160 MHz (Performance from 100 - 160 MHz based upon extrapolated TIA/TIA limits). The front surface of these panels is uninterrupted by screw heads or other hardware for a clean aesthetic appearance that allows sufficient space for circuit designation.

Panels available in 16-, 24-, 48-, and 96-port configurations

Black anodized panels can be mounted directly to an EIA standard 19 inch rack or cabinet



PATENTED



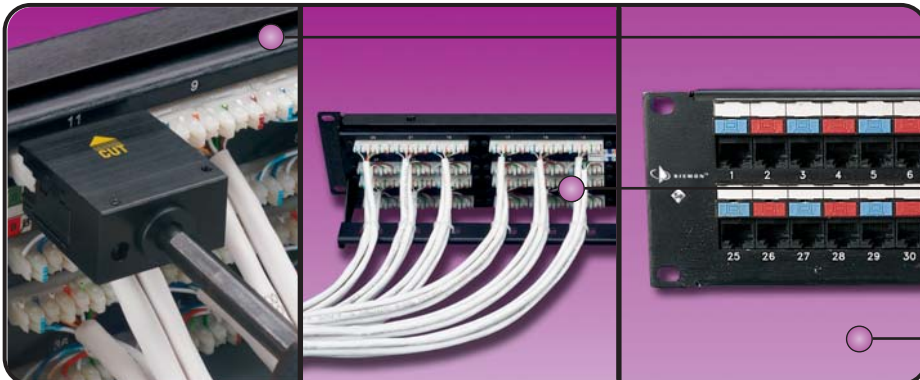
MODULAR PATCHING

The most economical way to order HD5 panels is in bulk project pack with universal T568A/B wiring option

Write-on area for panel designation

Port identification numbers on front and rear of panel

Modular outlets are FCC CFR 47 part 68 subpart F and IEC 60603-7 compliant and have 1,27 microns gold plated contacts



Siemon compliant pin technology allows the use of Siemon's multi-pair impact tool to significantly reduce termination time. S110® termination opening on the rear are compatible with S110 patch plugs

Integrated rear cable manager properly guides cables to and from the rear of the panel

Icon and label holder kits are included with every panel

ORDERING INFORMATION

HD5® Patch Panels:

HD5-1616-port panel, T568A/B wiring, 1 RMS



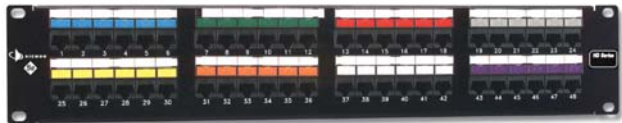
HD5-2424-port panel, T568A/B wiring, RMS



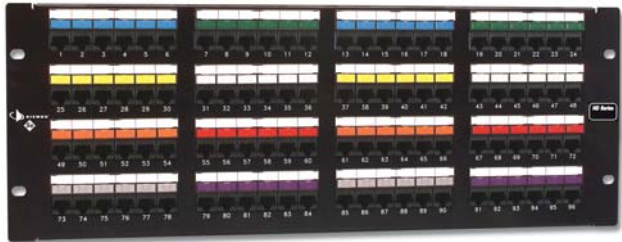
HD5-3232-port panel, T568A/B wiring, 2 RMS



HD5-4848-port panel, T568A/B wiring, 21 RMS



HD5-9696-port panel, T568A/B wiring, 4 RMS



Note: 1 RMS = 44.5mm

Panels include rear cable manager, icon label holders, designation labels, cable ties, and mounting hardware

Ⓜ Add "B" for bulk project pack of 5 panels (rear cable managers and icon label holders not included but can be ordered separately).

Note: 16- and 32-port HD5 panels feature S310® termination blocks and are not compatible with S110® multi-pair termination tools

12-Port HD5 Mounted on S89D Bracket:

The HD5-89D offers an economical solution for small applications and is ideal for retrofitting S66™ punch down blocks to a modular design.

HD5-89D-1212-port HD5 panel mounted on S89D bracket



height: 254.0mm,
width: 85.9mm
depth: 47.8mm

- HD-RWMRear cable management bracket for HD® patch panels
- HD5-ICON6Adhesive-backed strips in a package of 8 for colour-coding and port designation for 24-, 48-, or 96-port panels (icons not included)
- HD5-ICON6-LBL10 sheets of labels for HD5-ICON6 for laser printing (16 labels per sheet)*
- HD5-ICON8Adhesive-backed strips in a package of 4 for colour-coding and port designation for 16-, or 32-port panels (icons not included)
- HD5-ICON8-LBL20 sheets of labels for HD5-ICON8 for laser printing (8 labels per sheet)*

- HD5-LBL-IDAdhesive designation strips in a package of 20 for 24-, 48-, or 96-port panels
- HD5-LBL-480Adhesive strips for sequentially numbering panel ports 1 through 480 for 24-, 48-, or 96-port panels
- HD5-LBL-2White removable designation strips in a package of 50 for all versions of HD panels
- HD5-LBL6-(X)Removable designation strips in a package of 8 for 24-, 48-, or 96-port panels
- S788J44-pair S110® termination tool

Use (X) to specify colour: 2 = white, 5 = yellow, 6 = blue

*Visit our web site or contact our Technical Support Department for labeling software

Because we are continuously improving our products, The Siemon Company reserves the right to change specifications and availability without prior notice.

HD®, HD5®, MC®, MAX®, S66™, S110® and S310® are trademarks of The Siemon Company

For related product information request Spec Sheet(s):

- MAX® 5e Modules Punch-Down Termination (PROD-SS-MX5)
- MC® 5 Modular Cords (PROD-SS-MOD)

Siemon — EMEA HQ & UK
United Kingdom
Tel: +44 (0) 1932 571771

Siemon — France
Paris
Tel: +33 1 46 46 11 85

Siemon — Deutschland
Frankfurt
Tel: +49 (0) 69 97168 184

Siemon — Italia
Milano
Tel: +39 (02) 64 672 209