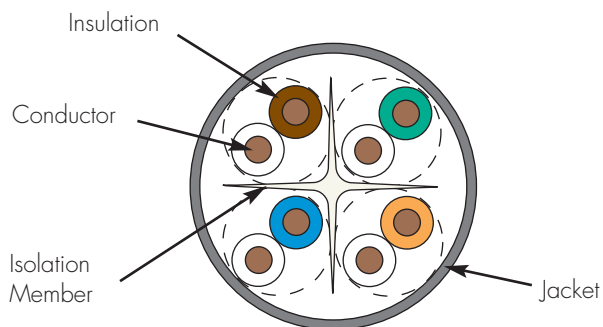
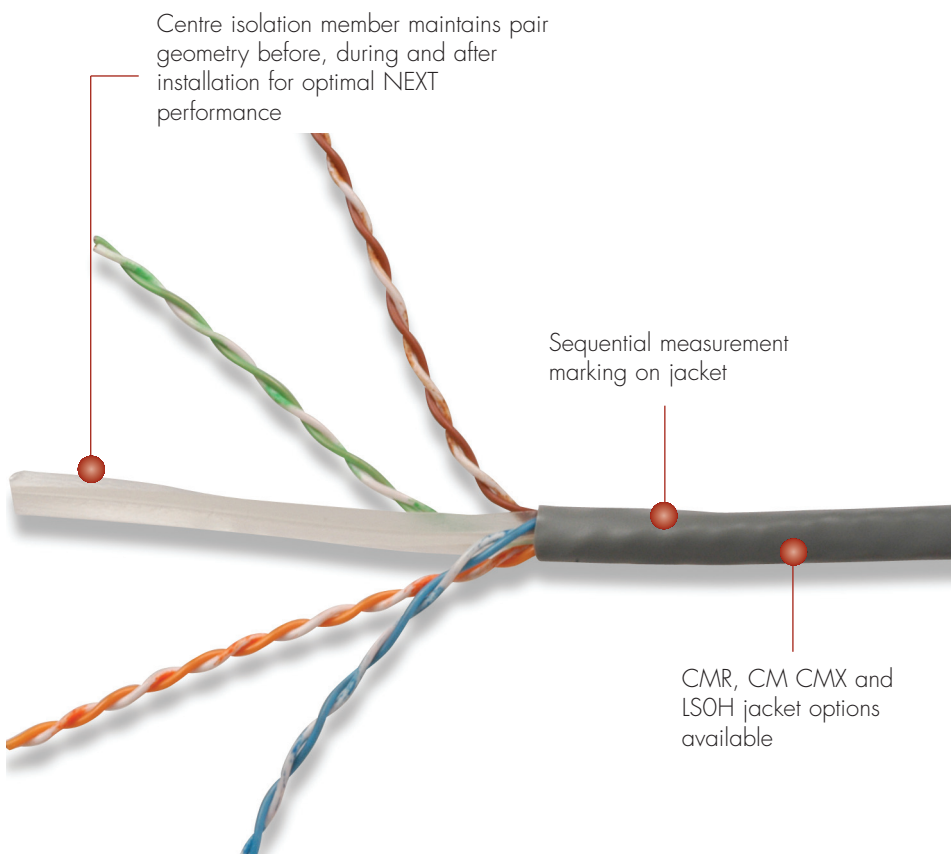


# SYSTEM 6<sup>®</sup> UTP CABLE

System 6 cable provides significant headroom above all TIA/EIA and ISO/IEC category 6/class E transmission performance specifications. Combine our high performance category 6 connectivity with System 6 cable and the result is a system with superior electrical performance for optimum applications support.



CABLE — INTERNATIONAL



## Cable Construction

- UTP
- 0.57mm (23 AWG) solid bare copper
- 6.35mm max jacket diameter
- Round jacket
- Centre isolation member

## Compliance

- ISO/IEC 11801:2002 (Category 6)
- TIA/EIA-568-B.2-1
- IEC 61156-5:2002 (Category 6)
- UL CMX
- UL CM, IEC 60332-1
- UL CMR and CSA FT4
- LSOH: IEC 60332-1, IEC 60754, and IEC 61034

CONNECTING THE WORLD TO A HIGHER STANDARD

WWW.SIEMON.COM



# PRODUCT INFORMATION



## ELECTRICAL SPECIFICATIONS

DC Resistance	<9.38 Ω/100m
DC Resistance Unbalance	5%
Mutual Capacitance	5.6 nF/100m
Capacitance Unbalance	<330 pF/100m
Characteristic Impedance (ohms)	1-100 MHz: 100 ± 15% 100-550 MHz: 100 ± 22%
NVP	68%
TCL	30-10 log(f/100) dB
Delay Skew	≤35ns

## PHYSICAL PROPERTIES

	LSOH	CMX/CM/CMR
Pulling Tension (max)	110N	110N
Bend Radius (min)	25mm	25mm
Installation Temperature	0 to 60°C	0 to 60°C
Storage Temperature	-20 to 75°C	-20 to 75°C
Operating Temperature	-20 to 60°C	-20 to 60°C

## TRANSMISSION PERFORMANCE

TIA/EIA & ISO/IEC

SIEMON TYPICAL

Frequency (MHz)	Insertion Loss (dB)		NEXT (dB)		PS NEXT (dB)		ACR (dB)		PSACR (dB)		ACR-F (dB)		PS ACR-F (dB)		Return Loss (dB)		Propagation Delay (ns)	
	TIA/EIA	SIEMON	TIA/EIA	SIEMON	TIA/EIA	SIEMON	TIA/EIA	SIEMON	TIA/EIA	SIEMON	TIA/EIA	SIEMON	TIA/EIA	SIEMON	TIA/EIA	SIEMON	TIA/EIA	SIEMON
1.0	2.1	1.8	74.3	87.3	72.3	82.3	72.2	85.5	70.2	80.5	67.8	84.8	64.8	79.8	20.0	29.0	570	545
4.0	3.8	3.5	65.3	78.3	63.3	73.3	61.4	74.8	59.4	69.8	55.8	72.8	52.8	67.8	23.0	32.0	552	527
10.0	6.0	5.6	59.3	72.3	57.3	67.3	53.3	66.7	51.3	61.7	47.8	64.8	44.8	59.8	25.0	38.0	545	520
16.0	7.6	7.1	56.2	69.2	54.2	64.2	48.6	62.1	46.6	57.1	43.7	60.7	40.7	55.7	25.0	34.0	543	518
20.0	8.5	7.9	54.8	67.8	52.8	62.8	46.2	59.9	44.2	54.9	41.8	58.8	38.8	53.8	25.0	34.0	542	517
31.25	10.8	10.0	51.9	64.9	49.9	59.9	41.1	54.9	39.1	49.9	37.9	54.9	34.9	49.9	23.6	32.0	540	515
62.5	15.5	14.4	47.4	60.4	45.4	55.4	31.9	46.0	29.9	41.0	31.9	48.9	28.9	43.9	21.5	32.0	539	514
100.0	19.9	18.6	44.3	57.3	42.3	52.3	24.4	38.7	22.4	33.7	27.8	44.8	24.8	39.8	20.1	32.0	538	513
160.0	25.8	24.1	41.2	54.2	39.2	49.2	15.5	30.1	13.5	25.1	23.7	40.7	20.7	35.7	18.7	31.0	537	512
200.0	29.0	26.8	39.8	52.8	37.8	47.8	10.6	26.0	8.6	21.0	21.8	38.8	18.8	33.8	18.0	29.0	537	512
250.0	33.0	30.5	38.3	51.3	36.3	46.3	5.3	20.8	3.3	15.8	19.8	37.0	16.8	31.8	17.3	29.0	536	511
300.0*	36.6	33.7	37.1	50.0	35.1	45.0	0.5	16.3	-1.5	11.3	18.3	36.0	15.3	30.0	16.8	27.0	536	511
400.0*	43.0	40.3	35.3	48.0	33.3	43.0	-7.9	7.7	-9.9	2.7	15.8	32.0	12.8	27.0	15.9	26.0	536	511
500.0*	48.9	39.9	33.8	48.0	31.8	42.0	-15.4	8.1	-17.4	2.1	13.8	31.0	10.8	26.0	15.2	25.0	536	511
550.0*	51.8	39.7	33.2	46.0	31.2	42.0	-18.8	6.3	-20.8	2.3	13.0	30.0	10.0	26.0	14.9	24.0	536	510

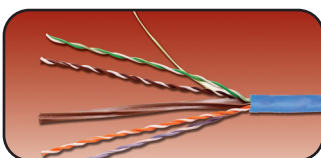
\*Values for frequencies above industry requirements are for information only

All performance based on 100 metres

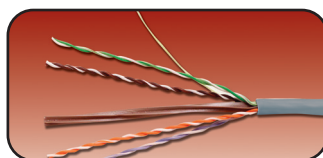
## System 6® UTP 4-Pair Solid Cable:

- 9C6X4-E3 .....PVC (CMX, IEC 60332-1), Gray Jacket, 305m Reel-in-Box
- 9C6M4-E3 .....PVC (CM, IEC 60332-1), Gray Jacket, 305m Reel-in-Box
- 9C6R4-E3 .....PVC (CMR, CSA FT4, Riser), Blue Jacket, 305m Reel-in-Box
- 9C6L4-E3 .....LSOH (IEC 60332-1), Violet Jacket, 305m Reel-in-Box

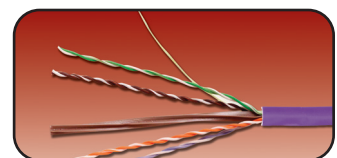
Other cable lengths also available: Add "-5CR" for 500m reel, "-1KR" for 1000m reel



9C6R4-E3/PC6P4-E3



9C6X4-E3/9C6M4-E3



9C6L4-E3

Because we continuously improve our products, Siemon reserves the right to change specifications and availability without prior notice.  
MAX®, MC®, BladePatch®, S210® and System 6® are trademarks of Siemon

### For related product information request Spec Sheet(s):

- MAX® 6 Modules (PROD-SS-10G6MXS)
- MC® 6 Modular Patch Cords (PROD-SS-10G6MCS)
- BladePatch 6 (PROD-SS-10G6BDPS)
- HD 6 Patch Panels (PROD-SS-HD6)
- MAX Patch Panels (PROD-SS-MXP)
- S210® Connection System (PROD-SS-S210)
- S210 Patch Plugs (PROD-SS-20P)

**Siemon — EMEA HQ & UK**  
United Kingdom  
Tel: +44 (0) 1932 571771

**Siemon — France**  
Paris  
Tel: +33 1 46 46 11 85

**Siemon — Deutschland**  
Frankfurt  
Tel: +49 (0) 69 97168 184

**Siemon — Italia**  
Milano  
Tel: +39 (02) 64 672 209

WWW.SIEMON.COM

