

# S110® MODULAR JACK BLOCKS

The Siemon modular jack block provides a pre-wired distribution solution for network applications. The modular jack block can be wall mounted and is typically used to connect horizontal cabling to network equipment. connections are made by terminating 4-pair horizontal cables to S110D connecting blocks and by patching to active equipment.



**PATENTED**

110 PRODUCTS

6- and 12-port panels may be detached from stand-off legs before, during or after installation

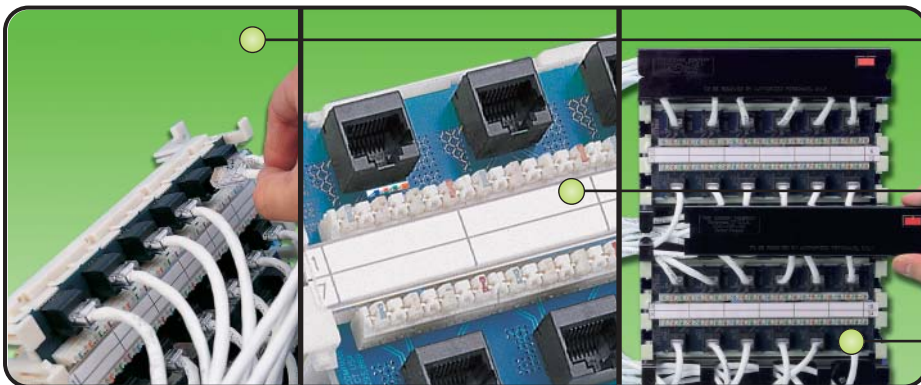
Multi-pair punch-down tool can be used to reduce termination time

Cable entering through access openings in bases are hidden by designation labels to provide a clean appearance

Horizontal cabling is routed to S110 termination in the channel between rows of outlets

Modular jacks are IEC 603.7 compliant and have 1,27 microns minimum hard gold plating over nickel

S110 4-pair connecting blocks feature a "universal" wiring for compatibility with both T568A and T568B wiring configurations



Cost effective modular patching solution for small to medium size LANs

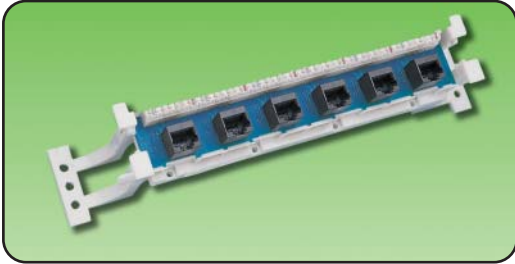
Modular outlets and S110 terminations are located on front of panels for easy access

Also available mounted to S110 Tower which includes cable managers and covers to route and protect horizontal cables for a clean appearance

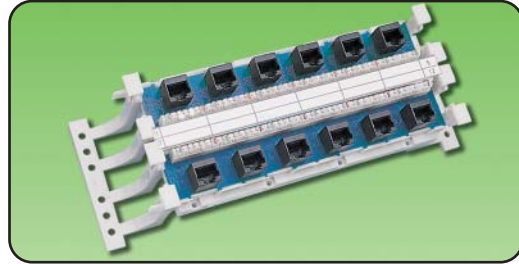
# ORDERING INFORMATION

110 PRODUCTS

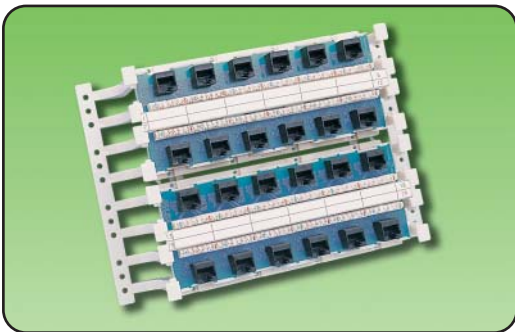
## S110® Modular Jack Wall Mount Blocks:



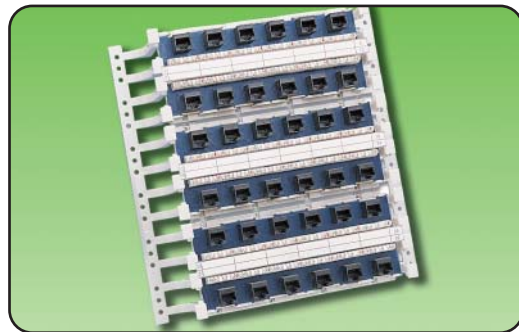
S110AB5-50JP .....6-port, T568A/B wiring, with detachable legs  
height: 45.7mm, width: 272mm, depth: 82.8mm



S110AB5-100JP .....12-port, T568A/B wiring, with detachable legs  
height: 91.4mm, width: 272mm, depth: 82.8mm

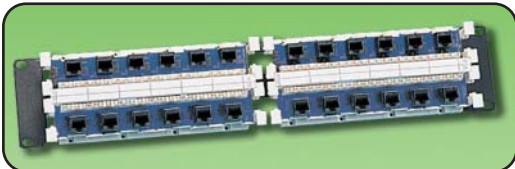


S110AB5-200JP .....24-port, T568A/B wiring, with permanent legs  
height: 183mm, width: 272mm, depth: 82.8mm



S110AB5-300JP .....36-port, T568A/B wiring, with permanent legs  
height: 274.3mm, width: 272mm, depth: 82.8mm

## Rack Mount Panels:



S110DB5-24RJP .....24-port jack panel, on a 19 inch panel, T568A/B wiring, 2 RMS  
Note: 1 RMS = 44.5mm

## Vertical Mount Panels:



S110AB5-50JP .....  
6-port, T568A/B wiring, for mounting on S89 bracket (not included)

height: 254.0mm,  
width: 85.9mm,  
depth: 86.6mm  
(dimensions include S89 bracket)

S89B .....89B mounting bracket  
S89D .....89D mounting bracket

Because we are continuously improving our products, The Siemon Company reserves the right to change specifications and availability without prior notice. S110® and MC® are trademarks of The Siemon Company

For related product information request Spec Sheet(s):

MC® 5 Modular Cords (PROD-SS-MOD)  
Termination Tools (PROD-SS-S78)

Siemon — EMEA HQ & UK  
United Kingdom  
Tel: +44 (0) 1483 480040

Siemon — France  
Paris  
Tel: +33 1 46 46 11 85

Siemon — Deutschland  
Frankfurt  
Tel: +49 (0) 69 97168 184

Siemon — Italia  
Milano  
Tel: +39 (02) 64 672 209

WWW.SIEMON.COM

ISO 9001 CERTIFIED ISO 14001 CERTIFIED

