

S110® DISCONNECT SYSTEM

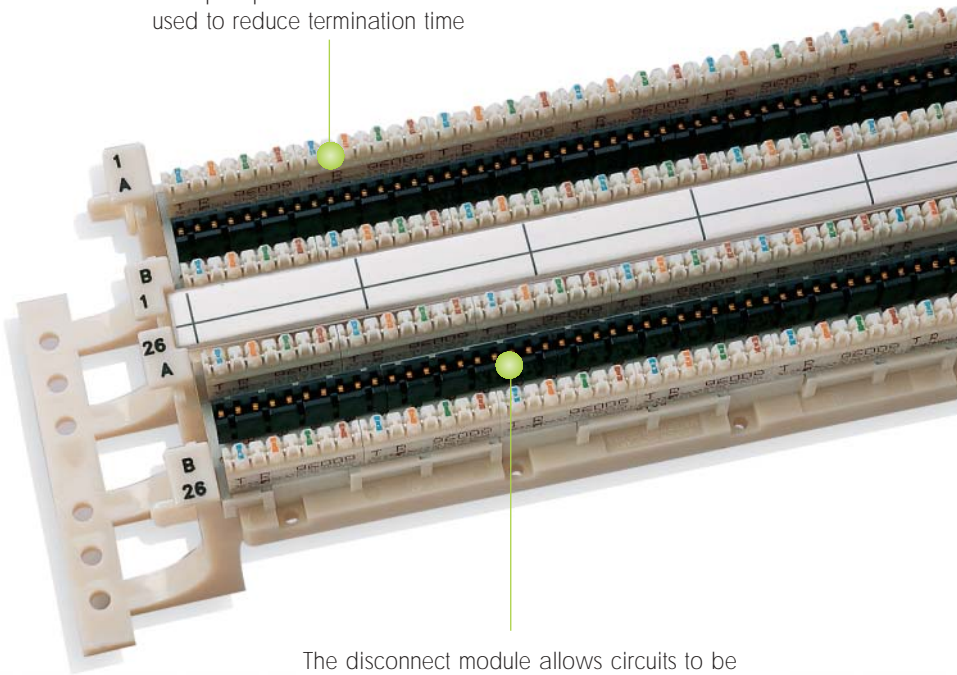
Siemon engineering innovation gives users category 5e performance plus the ability to isolate circuits for testing and monitoring without removing cable terminations. Through the use of patented reactance balancing technology, The Siemon Company offers the best of both worlds — a block that offers disconnect capability and compliance to category 5e transmission requirements. Ideal for use in consolidation point applications.



PATENTED

110 PRODUCTS

Multi-pair punch-down tool can be used to reduce termination time



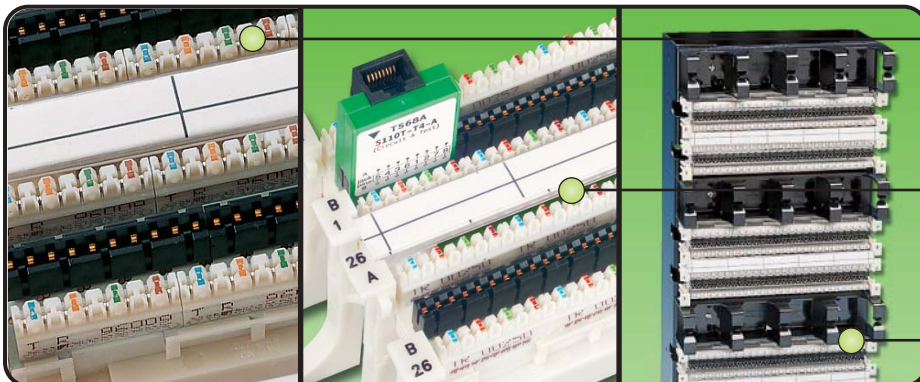
The disconnect module allows circuits to be accessed for bi-directional testing or monitoring without removing cable terminations



The disconnect test module allows circuits to be accessed for bi-directional testing or monitoring without removing cable terminations



1-, 2-, and 4-pair disconnect plugs open circuits to disconnect service



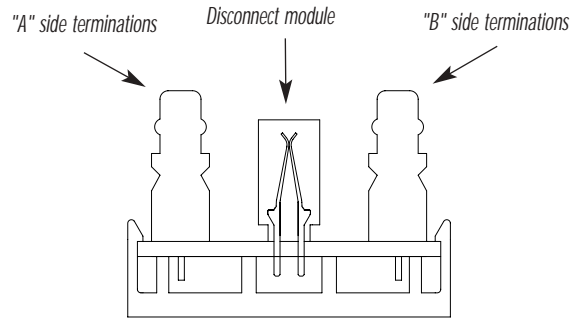
High strength disconnect contacts provide superior reliability for years of service

The S110T Disconnect System allows testing or monitoring of circuits without disrupting cable terminations or interrupting service

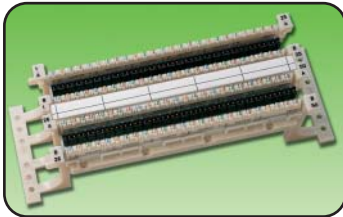
Also available mounted to S110 Tower®

How the disconnect block works:

The disconnect block provides category 5e performance in its "normal through" circuit state, and category 5 performance when connected through a category 5 disconnect test adapter. S110® blocks and disconnect modules are mounted on a printed circuit board. "A" side terminations and "B" side terminations are electrically common until a test adapter monitor or disconnect plug is inserted into the disconnect module.

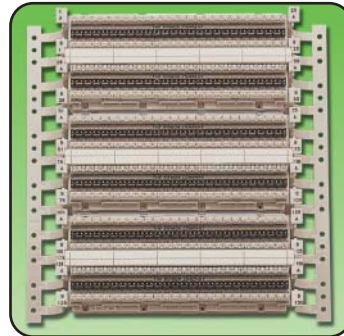


S110T Disconnect Blocks:



S110T(X)1-50.....
50-pair, disconnect block
without legs
S110T(X)1-50L.....
50-pair, disconnect block
with detachable legs

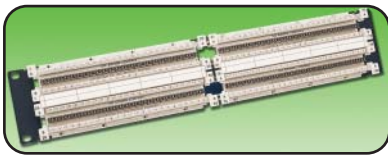
Use (X) to specify
connecting blocks:
A=5-pair, B=4-pair



S110T(X)1-150L.....
150-pair, disconnect block
with permanent legs

Use (X) to specify connect-
ing blocks:
A=5-pair, B=4-pair

S110T Rack Mount Disconnect Panels:



S110T(X)1-50RFT.....50-pair disconnect blocks on a 1 RMS
19 inch Panel
S110T(X)1-100RFT.....100-pair disconnect blocks on a 2 RMS
19 inch Panel

Use (X) to specify connecting blocks: A=5-pair, B=4-pair



S110T(X)1-50RWM.....50-pair disconnect blocks & two wire
managers on a 19 inch panel, 2 RMS
S110T(X)1-100RWM....100-pair disconnect blocks & two wire
managers on a 19 inch panel, 3 RMS

Note: 1 RMS = 44.5mm

S110T Disconnect Test Adapters:

S110T-T4-ACategory 5, 4-pair T568A, "A" side
test adapter
S110T-A4-ACategory 5, 4-pair T568B, "A" side test
adapter
s110T-U4-A4-pair, USOC, "A" side test adapter
S110T-T4-B.....Category 5, 4-pair T568A, "B" side
test adapter
S110T-A4-B.....Category 5, 4-pair T568B, "B" side
test adapter
S110T-U4-B.....4-pair, USOC, "B" side test adapter

S110T Disconnect Plugs:

S110T-DP-11-pair disconnect plug
S110T-DP-22-pair disconnect plug
S110T-DP-44-pair disconnect plug

Because we are continuously improving our products, The Siemon Company reserves the right to change specifications and availability without prior notice. S110® and Tower® are trademarks of The Siemon Company

For related product information request Spec Sheet(s):
S110 Modular Tower® System (PROD-SS-10M)

Siemon — EMEA HQ & UK
United Kingdom
Tel: +44 (0) 1483 480040

Siemon — France
Paris
Tel: +33 1 46 46 11 85

Siemon — Deutschland
Frankfurt
Tel: +49 (0) 69 97168 184

Siemon — Italia
Milano
Tel: +39 (02) 64 672 209