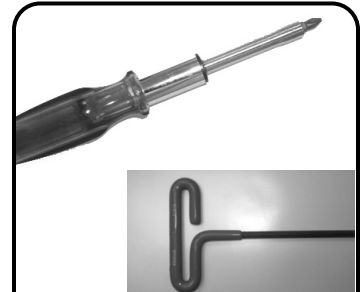


VPOD VPC Installation Instructions



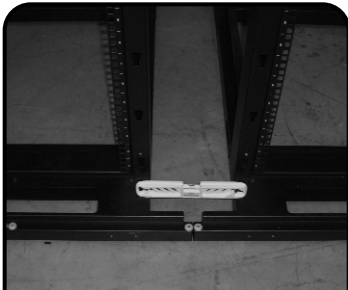
Parts Description

VPOD Vertical Patching Channel
(4) Phillips Head Screws
(4) Plastic Cup Washers
(4) Shoulder Bolts

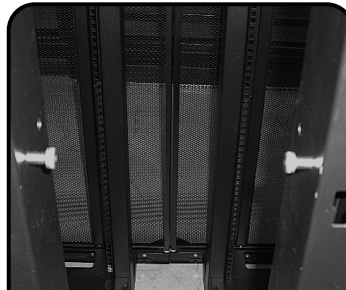


Required Tools

#2 Phillips Screw Driver
5/32 Allen Tool



1 Make sure both cabinets that the VPC will be installed between, are level and properly bayed together using all (4) baying brackets. See Baying Instructions.



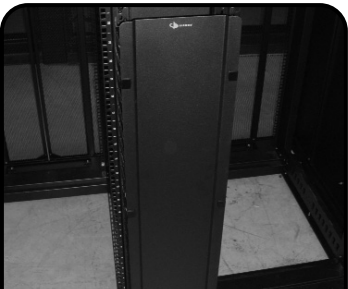
2 Install the (4) shoulder bolts provided onto the inside of the VPOD Frame as shown, using the 5/32" Allen Tool. The VPC may be mounted in the top half or bottom half of space between bayed cabinets.



3 Place the VPC over the (4) shoulder bolts and hook the back plate into place.



4 Install the (2) cable management fingers to each side of the VPC using the (4) Phillips screws and washers as shown .



5 Snap the VPC cover over the cable management fingers as shown.

To assist safe installations, comply with the following:

- A. Use caution when installing or modifying telecommunications circuits.
- B. Never touch uninsulated wire terminals unless the circuit has been disconnected.
- C. Never install this device in a wet location.
- D. Never install wiring during a lightning storm.

Global Headquarters
Watertown, Connecticut USA
Tel: (1) 866-548-5814

For a complete listing of our global offices visit our web site

