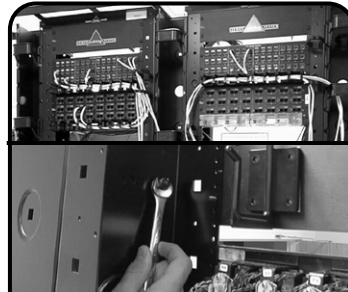
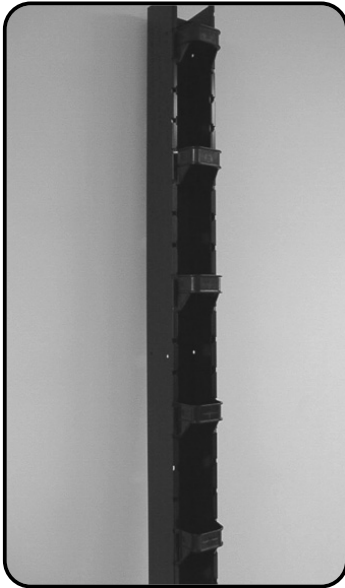


# RS-CNL/RS-CNL3 Vertical Cable Management Channel Instructions

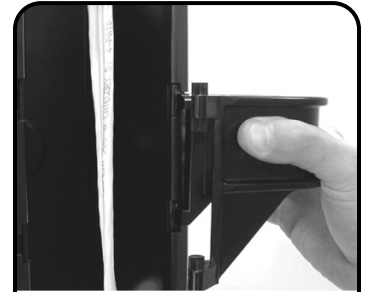


- 1** Position the vertical channel (P/N: RS-CNL or RS-CNL3) on the end of or between the RS-07 series racks. Align mounting holes and insert bolts. Install washers and nuts. Tighten nuts securely.

*Note: For new installations, do not secure RS-07 racks to floor until channels are installed. When used between rack, make sure the racks are properly aligned. Poor alignment may distort the channel inward or outward.*



- 2** Install retainers (P/N: RS-CNL-MGR) (6 included). To install retainers in channel, squeeze ribs on sides of retainers inward as shown. Insert retainer hinge pins in desired location on channel, release.



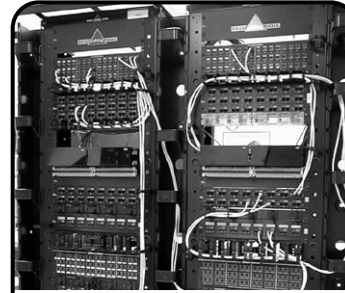
- 3** To route cables into manager, squeeze one side of retainer and hinge outward. Insert cables, replace retainer. Manager will hinge in either direction.



- 4** To remove retainer, squeeze retainer sides inward and pull outward away from channel.



- 5** Another suggested vertical cable/wire management option for the channel is mounting the high capacity cable hangers (P/N: RS-CH) (sold separately) inside the channel.



- 6** Completed RS-CNL installation showing vertical cable management.

## To assist safe installations, comply with the following:

- A. Use caution when installing or modifying telecommunications circuits.
- B. Never touch uninsulated wire terminals unless the circuit has been disconnected.
- C. Never install this device in a wet location.
- D. Never install wiring during a lightning storm.

**Global Headquarters**  
Watertown, Connecticut USA  
Tel: (1) 866-548-5814

For a complete listing of our global offices visit our web site