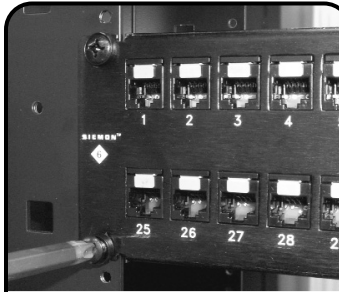
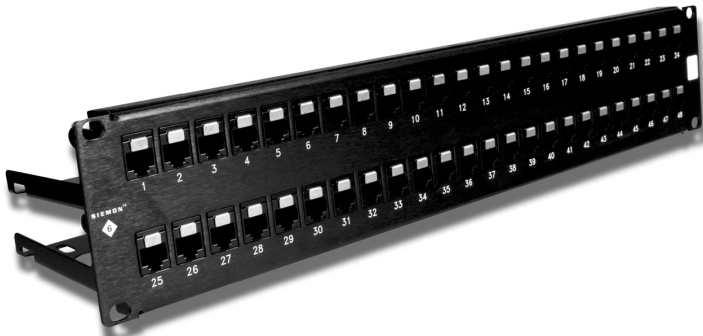
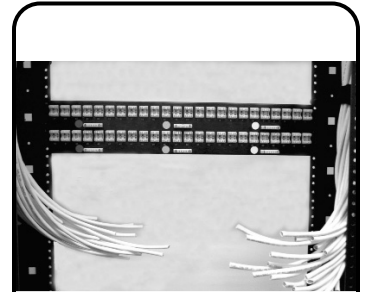


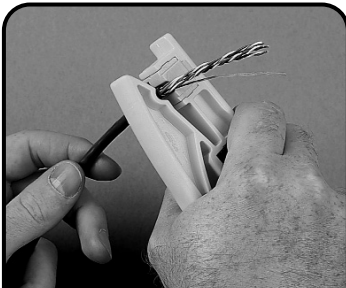
MapIT™ Patch Panel Instructions



1 Using the #12-24 machine screws and washers provided, mount the patch panel to the desired position of a 19 inch relay rack or equivalent.

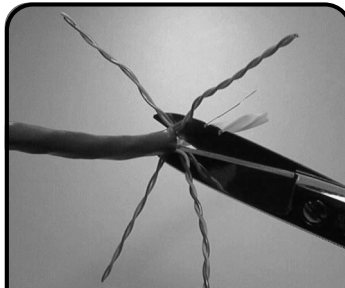


2 For ease of installation route half of the cables being terminated to the panel from the left, and the other half from the right. Ensure that enough slack is provided to properly secure cables to the cable manager when the cable manager is attached.



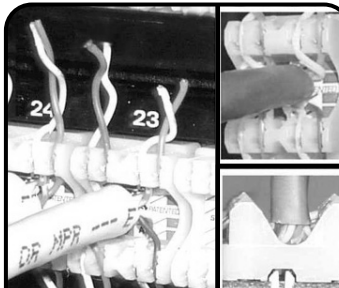
3 Strip back approximately 50mm (2 in.) of cable jacket using Siemon AllPrep™ tool (P/N: CPT-RGTP) or equivalent.

Note: Although round cable is shown, flat cables may also be used



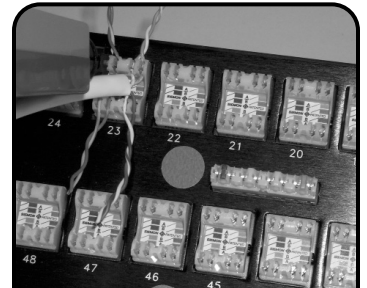
4 Fan out cables based on desired wiring scheme. Cut the rip cord or separator (if present) as close as possible to the jacket.

Note: Be careful not to nick conductors. There is no need to untwist pairs, (except for bonded pairs) since the 310™ block includes features to facilitate wire lacing.



5a Following the color coded label for T568A/B wiring schemes, center cable jacket within 310 block as shown. Lace all pairs by pressing firmly into position. Optionally, two pairs can be terminated first to help secure cable before lacing final two pairs.

Note: Begin at the bottom corner of the panel where the cables feed from, and work towards the middle.

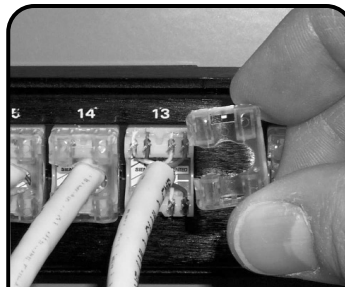


6a **Correct Termination:** Terminate using Siemon S814 termination tool or equivalent. Tool is in-line with 310 block. Cable jacket is centered down between 310 blocks.

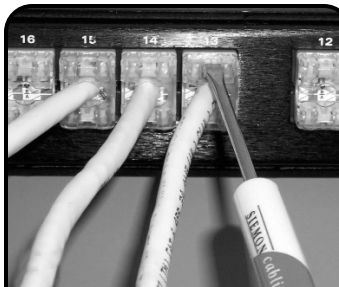
Note: To avoid damage to the MapIT contacts Do Not terminate the panel face down on a flat surface.



6b **Incorrect Termination:** Termination tool is not perpendicular to the 310 block. Cable jacket is not within 310 termination posts.



7 **Required Step** Slide termination cap over the cable and snap into place prior to testing.

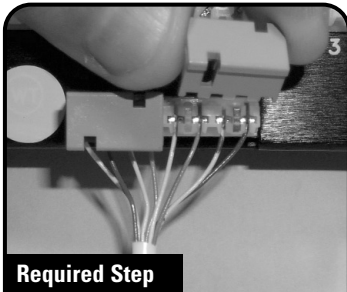


8 Cap removal can be accomplished by prying with a small screwdriver placed in slot as shown.



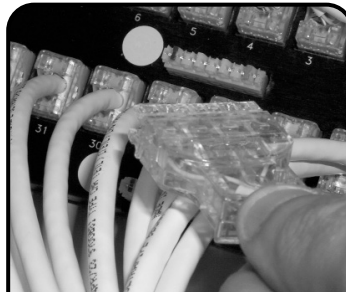
9 Follow the color code to terminate the MapIT Analyzer cables to the S110 block as shown. It is important to terminate the cables to their color matched termination points. (Ex. White jacketed cable to the white marked S110, Gray cable to the Gray marked S110 & the Blue cable to the Blue marked S110.)

MapIT™ Patch Panel Instructions

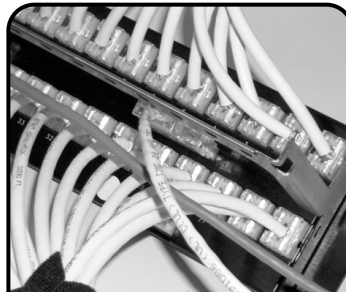


Required Step

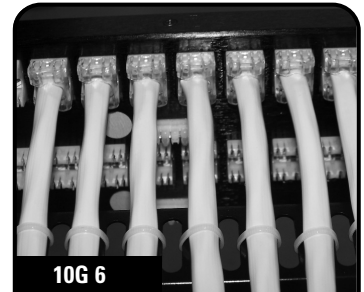
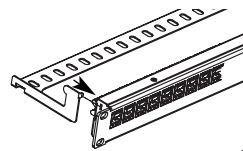
10 Snap termination cap over the S110 block as shown.



11 The MapIT Analyzer cables can also be terminated to an S110P4 patch plug and then plugged onto the S110 termination block.



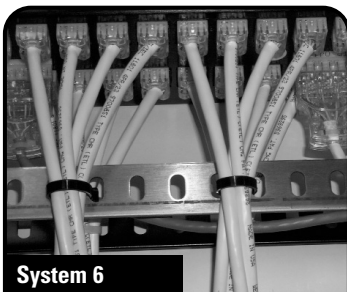
12 After cable termination, the rear cable manager should be attached to the panel with the horizontal cables above the bar and the MapIT Analyzer cables below.



10G 6

13 10G cables should be secured to the cable management bracket with the supplied cable ties or with VCM series cable managers.

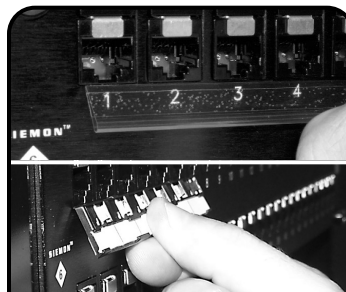
Note: Cable ties should be loosely cinched so as not to deform the bundle or cable jacket.



System 6

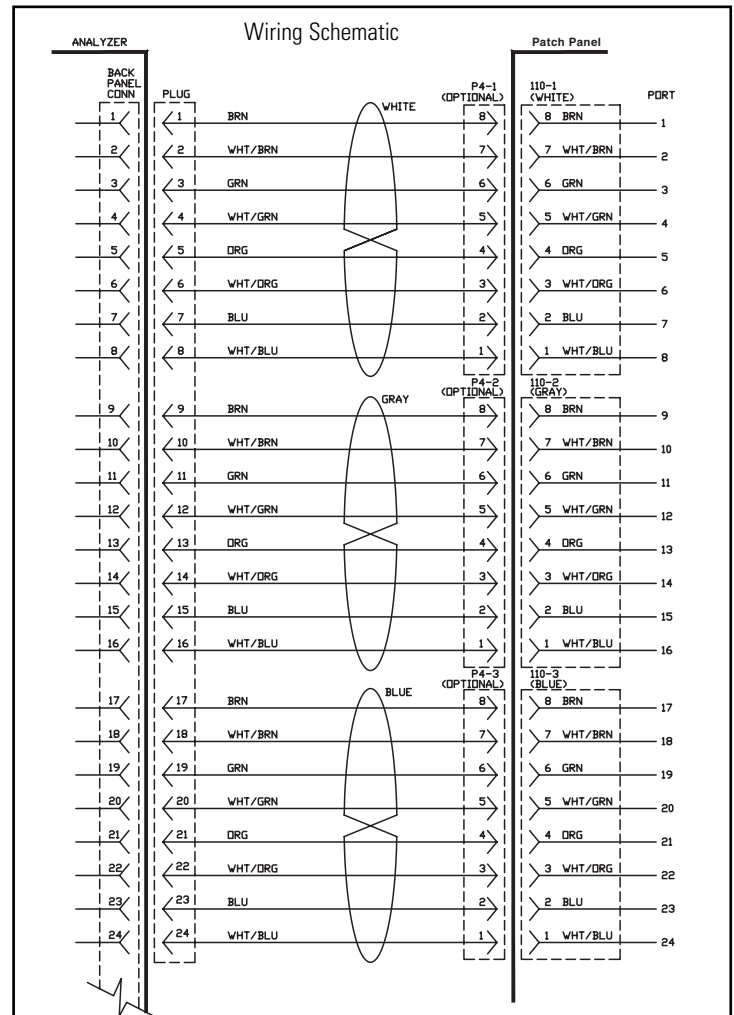
13a System 6 cables should be secured to the cable management bracket with the supplied cable ties or with VCM series cable managers.

Note: Cable ties should be loosely cinched so as not to deform the bundle or cable jacket.



14 If using the designation labels or icon/label holders provided, peel paper from the adhesive backing and press firmly to the panel.

Insert labels or labels and icons as needed.



To assist safe installations, comply with the following:

- Use caution when installing or modifying telecommunications circuits.
- Never touch uninsulated wire terminals unless the circuit has been disconnected.
- Never install this device in a wet location.
- Never install wiring during a lightning storm.



Siemon — Australia
Sydney, Australia
Tel: (02) 8977 7500

Siemon — China
Beijing, P.R. China
Tel: (86) 10 6559 8860

Siemon — Germany
Frankfurt, Germany
Tel: (49) (0) 69 97168 184

Siemon — Japan
Tokyo, Japan
Tel: (03) 5437 1580

Siemon — UK
Surrey, England
Tel: (44) (0) 1932 571771

Siemon — North America
Watertown, Connecticut
Tel: (1) 866-548-5814

**Siemon — CASA
Central & South America**
Bogota, Columbia
Tel: (011) 571 317 2121

Siemon — France
Paris, France
Tel: (33) 1 46 46 11 85

Siemon — Italy
Milano, Italy
Tel: (39) 02 64 672 209

Siemon — Southeast Asia
Singapore
Tel: (65) 345 9119



www.siemon.com