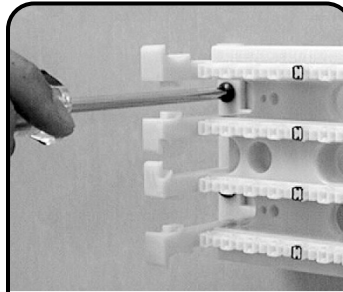
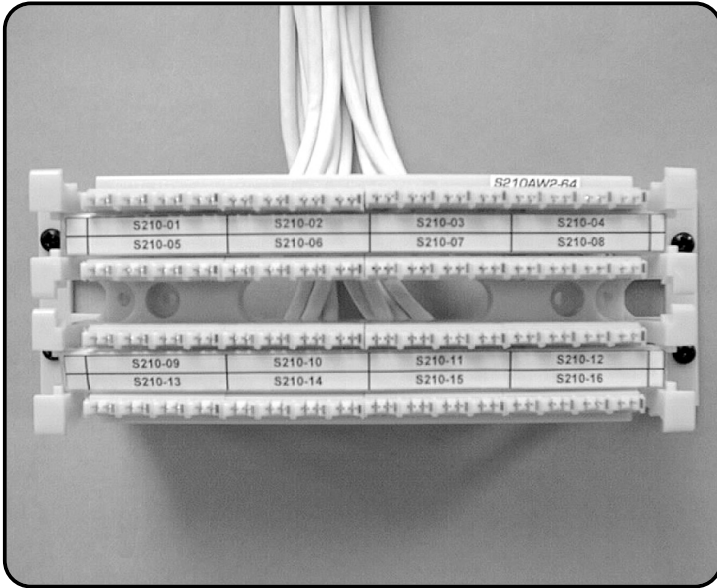
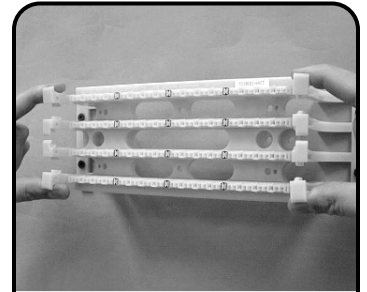


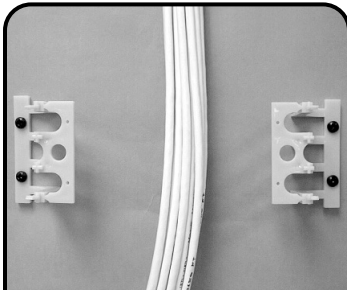
S210® Wiring Block Instructions



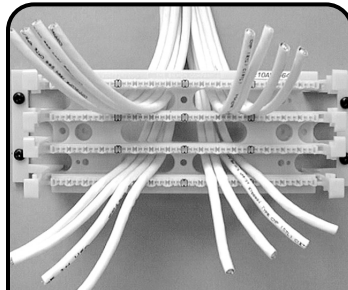
- 1 S210 Wall Mount**
Mount the S210™ wiring base and legs onto a suitable mounting surface with the necessary screws and hardware.



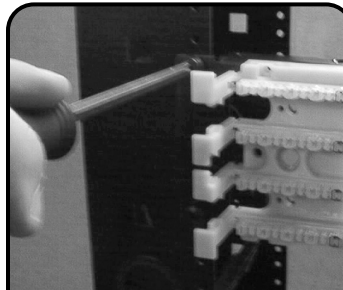
- 2** Remove the S210 wiring base from the legs by depressing the outer 4 fanning strips of the S210 wiring base inward to defeat the leg latches. Pull the wiring base away from the legs.
Note: Legs are detachable on the 64-pair version only.



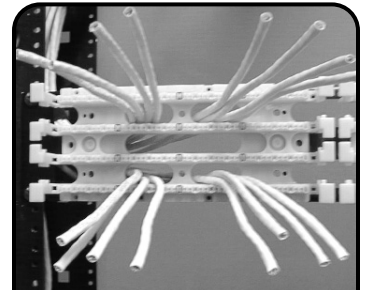
- 3** With the S210 base removed, route the cable between the legs.



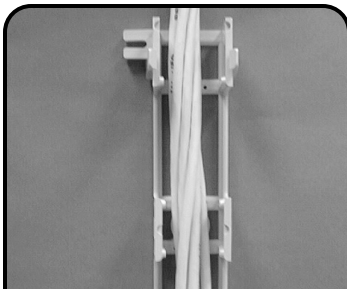
- 4** Lace the cables through the appropriate openings in the wiring base and snap the S210 wiring base back onto the legs. Push the wiring base onto the legs until the latches “snap” into place. Proceed to step 9 for terminating instructions.
Note: For additional security, the assembly can be fastened together using the self-tapping, Phillips-head screws included.



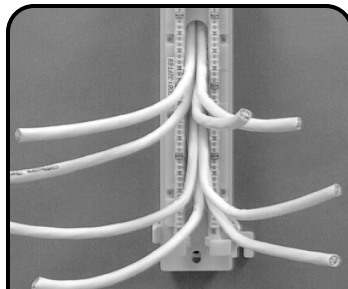
- 5 S210 Rack Mount**
Mount S210 19 inch panel onto the rack using the #12-24 screws and washers provided.



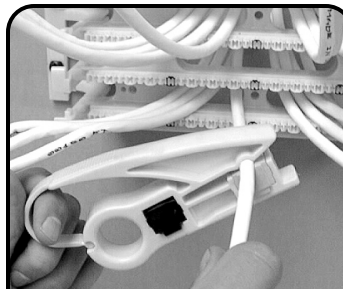
- 6** Lace the cables through the appropriate openings in the S210 base. Proceed to step 9 for terminating instructions.



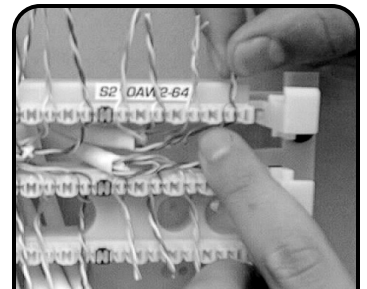
- 7 S210 S89 Retainer Mount**
Mount S89B or S89D bracket onto a suitable mounting surface with the necessary screws and hardware. Route the cable through the center channel of the bracket.



- 8** Lace the cables through the center hole of the S210™ 89 retainer and snap the retainer onto the S89 bracket. Proceed to step 9 for terminating instructions.



- 9 S210 Wiring Block**
Strip back only as much cable jacket as is necessary to terminate the conductors using the Siemon AllPrep™ Cable Preparation Tool (P/N: CPT-RGTP) or equivalent.
Note: It is not recommended to strip more than 76mm (3 in.) of cable jacket for category 5 or higher installations.



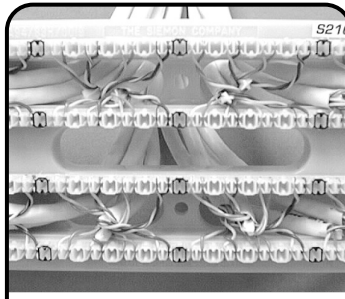
- 10** Lace the conductors into the S210 wiring base. Pair twist must be maintained to within 12mm (.5 in.) of the point of termination for category 5 or higher installations. Ample channel space is provided to allow jacketed cable to continue close to the point of termination.
Note: The Pyramid™ wire entry system on the base and block will separate twisted conductors without special preparations or handling.

S210 Wiring Block Instructions

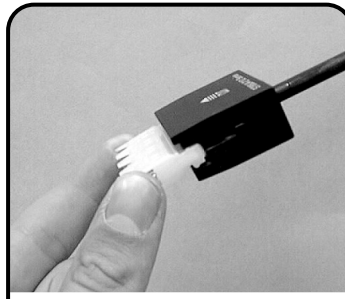


- 11** Seat the conductors and trim off the excess wire with the cutting edge of the Siemon S210 Multi-Pair Termination Tool (P/N: S788J4-210) or equivalent.

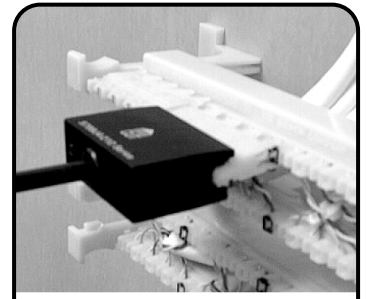
NOTE: Be sure that the cutting edge is properly oriented prior to trimming the wire.



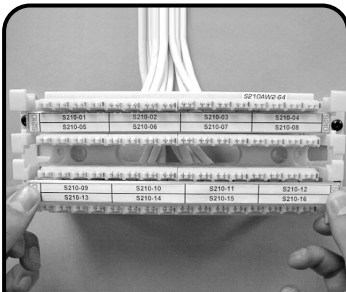
- 12** Visually inspect the conductor and cable placement to eliminate miswires or reversals.



- 13** Insert a connecting block (P/N: S210C-4) into the head of the Siemon termination tool.

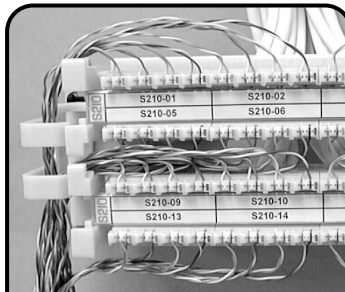


- 14** Carefully align the connecting block over the wiring base with the blue marking to the left side of the block (printed side down) and seat the connecting block.

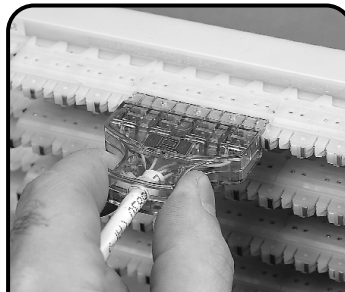


- 15** Label the circuits then slide the designation strip into the label holder (P/N: S210-HLDR) and snap the holder onto the wiring base. Complete the connections using CJ5 series cross-connect wire or patch cables.

NOTE: Remove designation strips prior to removing base from legs.



- 16** The Siemon vertical wire manager (P/N: S100A2) can be ordered separately and mounted to the legs of the S210 block to provide vertical cable management for S210 patch cords or cross-connect wire.



- 17** **S210 Patch Plug**
Position plug with icon pocket on top when mating with S210 connecting block.

To assist safe installations, comply with the following:

- A. Use caution when installing or modifying telecommunications circuits.
- B. Never touch uninsulated wire terminals unless the circuit has been disconnected.
- C. Never install this device in a wet location.
- D. Never install wiring during a lightning storm.



Global Headquarters
Watertown, Connecticut USA
Tel: (1) 866-548-5814

For a complete listing of our global offices visit our web site



www.siemon.com