

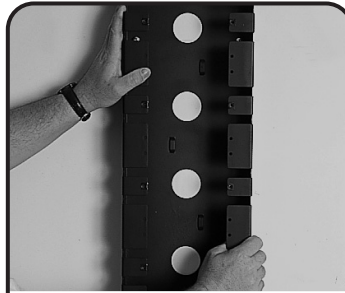


S110M Modular Tower® System Instructions



- 1** Draw a horizontal line on the mounting surface, appx. 68" from the finished floor elevation. Partially insert two #14-3/4" wood screws (not provided) 177.8mm (7 in.) apart, on the line where you wish to begin the installation.

Note: For the purpose of this example, a plywood application is assumed. Mounting hardware will differ with the application.



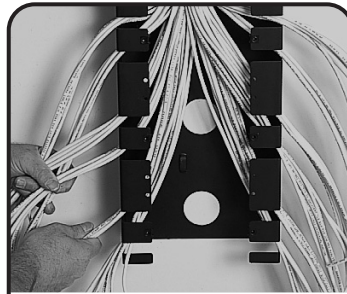
- 2** Hang the S110® frame from these screws and ensure that the frame is hanging plumb. Once the frame is in position, tighten the upper screws securely, and install two more screws into the two remaining holes. The addition of subsequent frames is easily accomplished by either mounting the next frame directly under or to either side of the first frame.



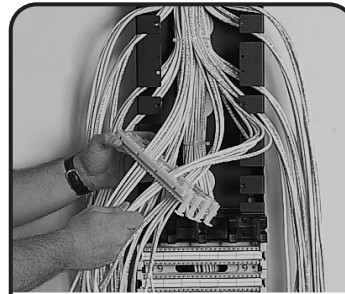
- 3** Route the cables into the Tower® from either the top or the bottom. It is recommended that bulk cables be routed to the corners of the room as this will conserve valuable wall space.



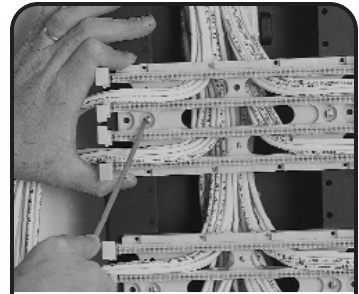
- 4** Using Siemon velcro® cable managers, fasten the cables to the frame using the lanced slots located on the back of the frame. Care should be taken not to over-tighten cable bundles.



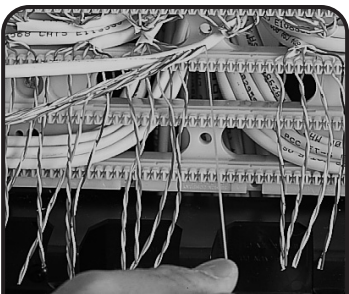
- 5** The individual cables are now ready to be fanned out into their appropriate positions through the cutouts provided along the Tower®. Multi-pair cables (25-pair or greater) should be placed into the fanning strips according to their binder groups. Place six 4-pair cables into each of the slots along both sides of the Tower®.



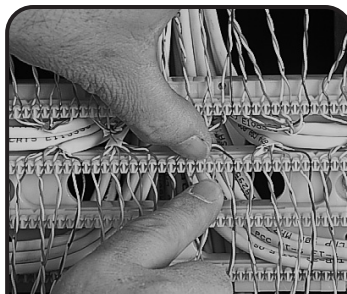
- 6** Mount the S110 wiring blocks beginning at the opposite end of the frame from where the cables enter the frame (i.e. if the cables enter from the top of the frame, then begin installing the S110® wiring blocks at the bottom of the frame and build upwards). Route six cables through the slots in the upper and lower half of the S110® wiring base.



- 7** Position the S110DW2 wiring blocks over the mounting holes in the frame. Using the screws provided, secure the blocks to the frame using a phillips screwdriver.



- 8** Strip back cable jacket (only as much as necessary to terminate the conductors). If the cable has a draw string, use the string as a guide to gauge where to terminate the cable jacket as shown.

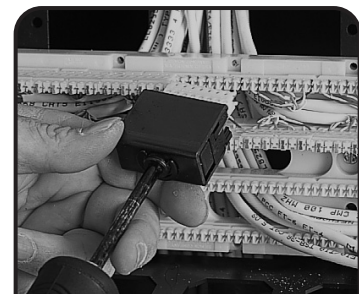


- 9** Lace the conductors into the S110® wiring base. Pair twist must be maintained to within 12mm (0.5 in.) of the point of termination for category 5 installations.

Tip: Lace the blue and brown (first and last) pairs first. Then the orange and green (center) pairs. The result is a more even distribution of pairs on the wiring base.



- 10** Seat the conductors and trim off the excess wire with the cutting edge of a Siemon S788 impact tool or equivalent. Visually inspect the cable termination at this point to eliminate any mis-wires or reversals.

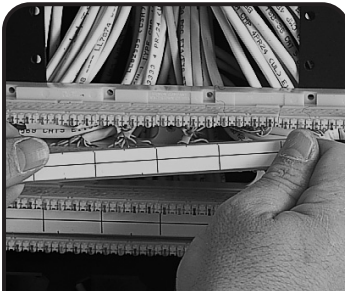


- 11** Insert connecting block into the head of a Siemon S788 5-pair impact tool or equivalent. Carefully align the S110C connecting block over the wiring base with the blue marking to the left side of the block (date code down), and seat the connecting block.





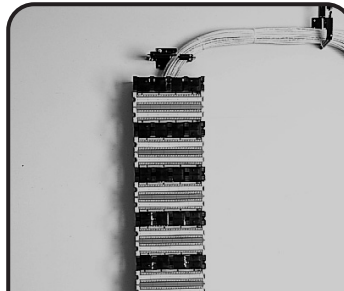
S110M Modular Tower System Instructions



12 Fold the designation strip to the desired size. The line on the strip should align with each S110 connector. Label the circuits accordingly. Slide the corresponding designation strip into the S110-HLDR. Snap the holder onto the wiring block.



13 The S110B1RMS cable managers are now ready to be installed. Line up the holes in the cable managers with the holes in the frame. Using the 6-32 x 3/8 screws provided, secure the cable managers to the frame using a phillips-head screwdriver.



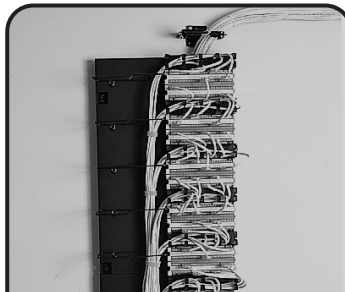
14 The Tower unit is completed and ready to cross-connect to your equipment. To help manage these cross-connections, it is recommended mounting the appropriate size S110M-WM or S188 Series vertical cable managers (sold separately) at each end and between every one or two rows of vertical Tower units.



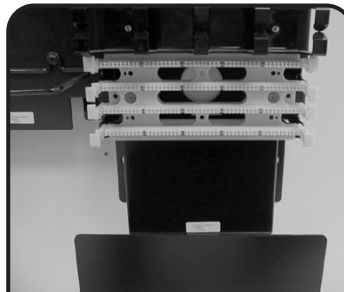
15 Small Scale Manager: Position the S110M-WM-XXX vertical cable/wire manager(s) adjacent to the S110 Tower. Align the top of the cable/wire manager with the top of the tower unit. Secure the manager to the wall with the appropriate mounting hardware (not provided).



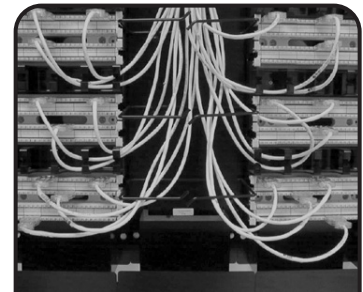
16 Small Scale Manager: To install cable management clips, align the square base of the clips with the square openings in the cable/wire manager base and rotate the clips 45 degrees to lock into place.



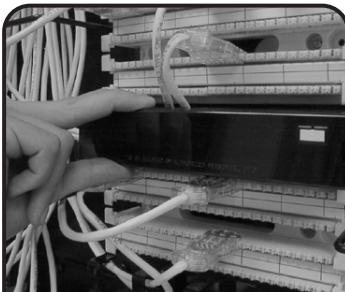
17 Vertical Cable Manager: Mount the S188 vertical cable manager(s) by aligning the top of the cable manager with the top of the tower unit and securing it to the wall. Lace patch cords or jumpers through the vertical cable management.



18 Upon completion the optional S188-WD metal trough can be added at this time to assist in horizontally routing large capacity cross-connects. Mount the S188WD directly under each Tower assembly.



19 S110M Modular Tower System shown with S188 vertical cable manager and S188-WD metal trough, populated with patch cables.



20 Install covers (included) on the S110B1RMS cable managers after patch cables are installed.



21 Optional RS-CH can be mounted in the provided openings for additional cable management.

To assist safe installations, comply with the following:

- A. Use caution when installing or modifying telecommunications circuits.
- B. Never touch uninsulated wire terminals unless the circuit has been disconnected.
- C. Never install this device in a wet location.
- D. Never install wiring during a lightning storm.

Approved per
CSA 182.4-M90



Communication Circuit
Accessory Listed 5755



Global Headquarters
Watertown, Connecticut USA
Tel: (1) 866-548-5814

For a complete listing of our global offices visit our web site

