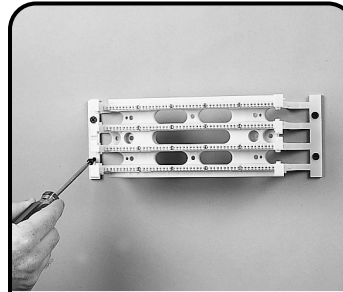
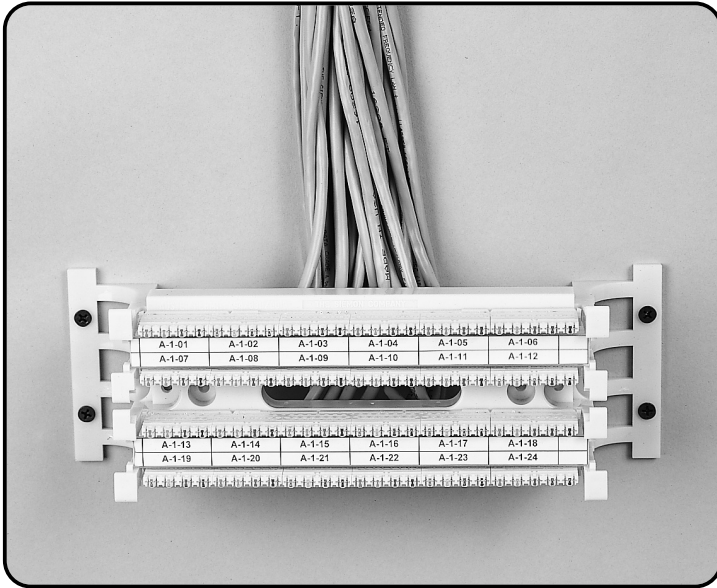
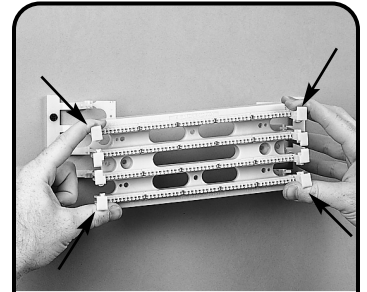


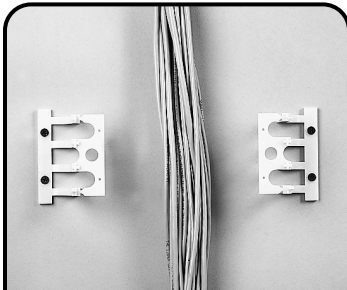
# S110AW2-100 Instructions



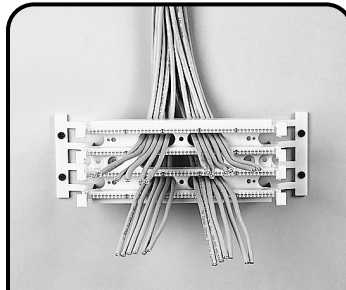
**1** Mount the S110® wiring base and legs onto a suitable mounting surface with the necessary screws and hardware.



**2** Remove the S110® wiring base from the legs by depressing the outer 4 fanning strips of the S110® wiring base inward to defeat the leg latches. Pull the wiring base away from the legs.

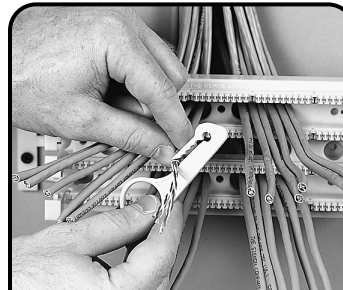


**3** With the S110® base removed, route the cable between the legs.

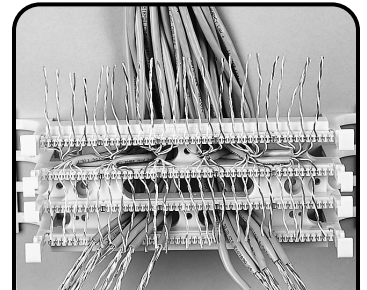


**4** Lace the cables through the appropriate openings in the wiring base and snap the S110® wiring base back onto the legs. Push the wiring base onto the legs until the latches "snap" into place.

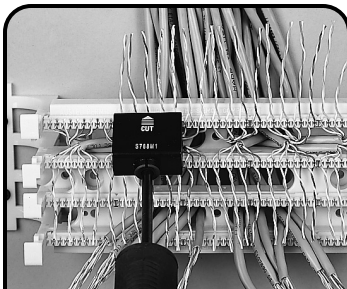
*NOTE: For additional security, the assembly can be fastened together using the self-tapping, Phillips-head screws included.*



**5** Strip back only as much cable jacket as is necessary to terminate the conductors using the Siemon CPT tool or equivalent.

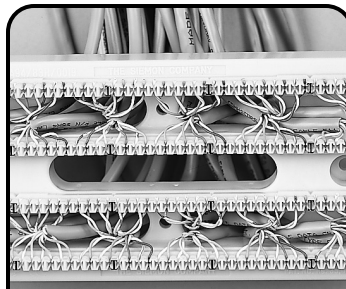


**6** Lace the conductors into the S110® wiring base. Pair twist must be maintained to within 12mm (.5") of the point of termination for category 5 installations. Ample channel space is provided to allow jacketed cable to continue close to the point of termination.

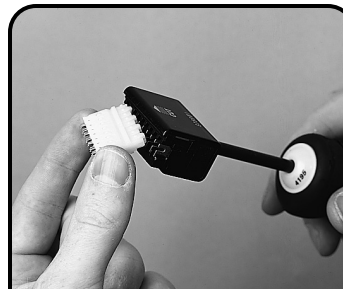


**7** Seat the conductors and trim off the excess wire with the cutting edge of the Siemon S788 impact tool or equivalent.

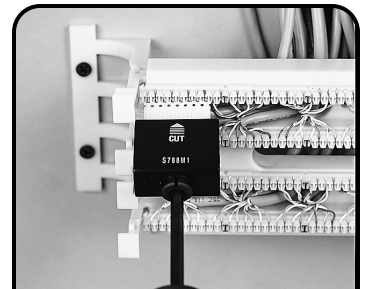
*NOTE: Be sure that the cutting edge is properly oriented prior to trimming the wire.*



**8** Visually inspect the conductor and cable placement at this point to eliminate any miswires or reversals.

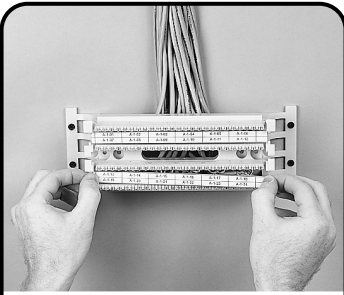


**9** Insert a S110C connecting block into the head of a Siemon S788 impact tool.



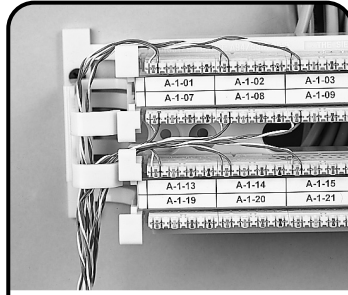
**10** Carefully align the S110C connecting block over the wiring base, with the blue marking to the left side of the block (gray stripe down), and seat the connecting block.

# S110AW2-100 Instructions



**11** Label the circuits then slide the designation strip into the S110-HLDR and snap the holder onto the wiring base. Complete the connections using CJ5 series cross-connect wire or S110P patch cables.

*NOTE: Remove designation strips prior to removing base from legs.*



**12** The Siemon S110AW2 vertical wire manager can be ordered separately and mounted to the legs of the S110 to provide vertical cable management for S110® patch cords or cross-connect wire.

## To assist safe installations, comply with the following:

- A. Use caution when installing or modifying telecommunications circuits.
- B. Never touch uninsulated wire terminals unless the circuit has been disconnected.
- C. Never install this device in a wet location.
- D. Never install wiring during a lightning storm.



**Global Headquarters**  
Watertown, Connecticut USA  
Tel: (1) 866-548-5814

For a complete listing of our global offices visit our web site

