

NEXT GENERATION
INTELLIGENT INFRASTRUCTURE MANAGEMENT

MapIT[®] G2

CONNECTING THE WORLD TO A HIGHER STANDARD

WWW.SIEMON.COM



MapIT G2

Next-Generation Intelligent Infrastructure Solution for Physical Layer Network Management

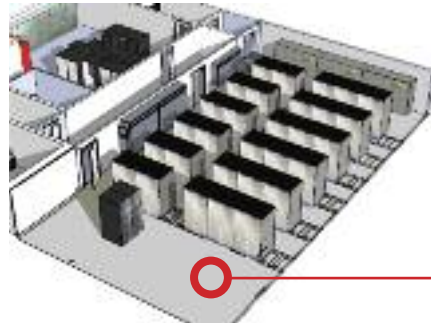
Introducing MapIT G2, a complete upgrade of Siemon's popular MapIT intelligent infrastructure management (IIM) solution. MapIT G2 integrates a powerful combination of innovative Smart Patch Panels, user-friendly Master Control Panels and MapIT IM and PLM software to provide real-time tracking and reporting of network-wide physical layer activity. This benchmark IIM system offers truly unparalleled ability to manage a complex network.

- **28% of downtime in data centers is due to change and human error¹**
- **Every hour of downtime costs \$100K²**
- **49% of Fortune 1000 IT managers listed reducing cost as a top priority²**

Monitor Your Network.
Manage Your Network...
Protect Your Network...

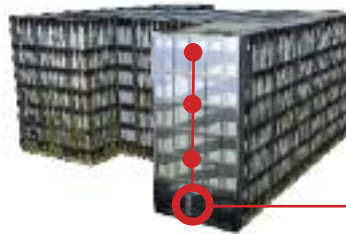
Wherever It Is

From the Data Center . . .



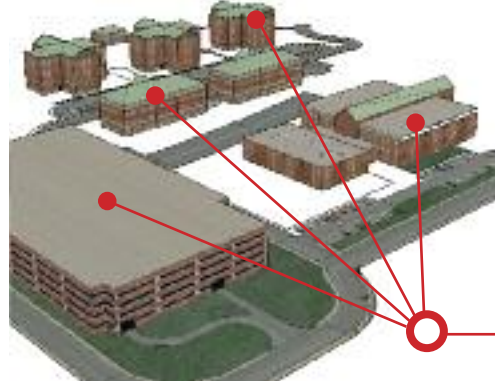
Centralized High-Density

To Multi-Floor Offices . . .



Centralized Mid-Density

To the Campus . . .



De-Centralized Low-Density

To your Global Branches.



Remote Low-Density

Monitor

Detailed Network Views

Hierarchical views lay out your entire network, from rack and cabinet infrastructure views, to work area and floor layouts - all with complete circuit diagrams, including active equipment. This information can even be displayed locally on MapIT G2's LCD-equipped Control Panels and Smart Patch Panels.

Database Accuracy

All network information is stored in a MapIT IM and PLM software-driven database, which is automatically updated in real time as moves, adds and changes are made, ensuring that the network condition is known at all times.

Maximizes Utilization of Networking Assets

MapIT IM and PLM software's utilization reports let you see available switch or patch panel ports. End devices can be tracked by location, equipment type, manufacturer, service or other criteria, providing better visibility and utilization of these critical assets.

Manage

Reduce Downtime

MapIT G2 circuit trace capability quickly identifies the location of a fault in a channel - information can be displayed on MapIT panels to guide onsite staff, drastically reducing the time required to find and fix a network outage.

Better Manage Remote Sites

MapIT provides a real-time view of networks at remote offices, helping to ensure compliance with corporate IT policies and discouraging unauthorized changes to the network.

Streamline Work Order Process

Use MapIT IM and PLM software's integrated work order module to ensure that orders are completed properly. Also, work orders can include pictures of circuit traces, rack views and floor layouts, providing useful visual aids for technicians.

Protect

Real-Time Alerts

MapIT IM and PLM software can send e-mail alerts to IT or security staff in real time when unauthorized events occur on the network — such as detecting unauthorized devices attempting to connect to your LAN, enhancing endpoint security.

Regulatory Compliance

MapIT maintains an audit log of all network events, simplifying compliance with regulatory mandates, such as Sarbanes-Oxley, ITIL, HIPPA, FDA 21 CFR Part II, etc.

Improve Response Time

MapIT IM and PLM software features a robust search engine. Help desk staff can use this feature to quickly locate any item on your network and view its attributes and connections.

MapIT G2 - The New Intelligence

Despite the benefits to network professionals, IIM systems have earned a reputation as difficult and complicated to implement. As much as the management efficiencies and security capabilities of these systems provide a clear and immediate impact on network operations, their perceived complexity was seen as a barrier to some.

MapIT G2 was developed specifically to eliminate that complexity. By bringing intelligence directly to the patch panel and fiber enclosure, systems are deployed and functional faster. User-friendly 1U MapIT G2 Control Panels can monitor up to 2880 of these smart ports each via simple bus connections. These control panels then provide a central interface with the MapIT IM and PLM software - a single connection to your whole network.

And MapIT G2's unique benefits don't stop there. . .

Interactive

Smart panels and fiber enclosures feature a graphic LCD for patch cord tracing, diagnostics and technician guidance. The LCD can also display dynamic labeling information pulled directly from the MapIT IM and PLM software database.



Powerful

The MCP collects data from all panels in the system and relays it to the MapIT IM and PLM software. This advanced device provides a large LCD screen and keypad to interface to the MapIT IM and PLM software – eliminating the need for technicians to access software or carry PDA devices.

Reliable

MapIT G2 is built for reliability. All components have been through extensive durability testing and exceed a 20-year MTBF (Mean Time Between Failures). If that weren't enough, we also built in redundant power and Ethernet connections into the Master Control Panel. Finally, the entire system is modular and in the unlikely event that any component fails, it can be replaced or repaired without disrupting critical network connections and applications.



Green

Up to 75% Lower Power Consumption

In addition to all the state-of-the-art features MapIT G2 has to offer, it uses much less power than competing systems. In fact, MapIT G2 uses up to 75% less power than other intelligent cable management systems. It also features time out settings, which can reduce power consumption even further.

Reduced Heat Generation

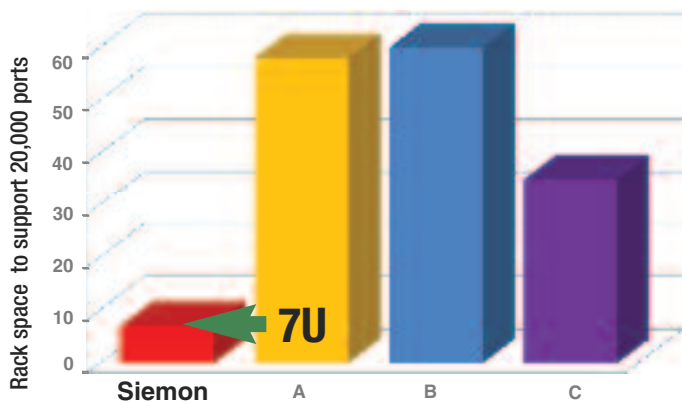
MapIT G2 components are optimized to run cool in data center applications. All components generate virtually no heat and do not require cooling fans. Additionally, the components are very low profile (1U) so they do not impede airflow in cabinets.



Compact

Up to 80% Higher Density

MapIT G2 innovative design dramatically reduces the amount of rack space required for intelligent infrastructure management components. Because the intelligence is built into the patch panels, MapIT G2 provides up to 80% better density than competing systems. For example, some systems require up to 60 rack mount spaces to manage 20,000 ports. MapIT G2 can manage the same number of ports with only 7U of rack space.



Efficient

Up to 76% Reduction in Pathway Space Usage

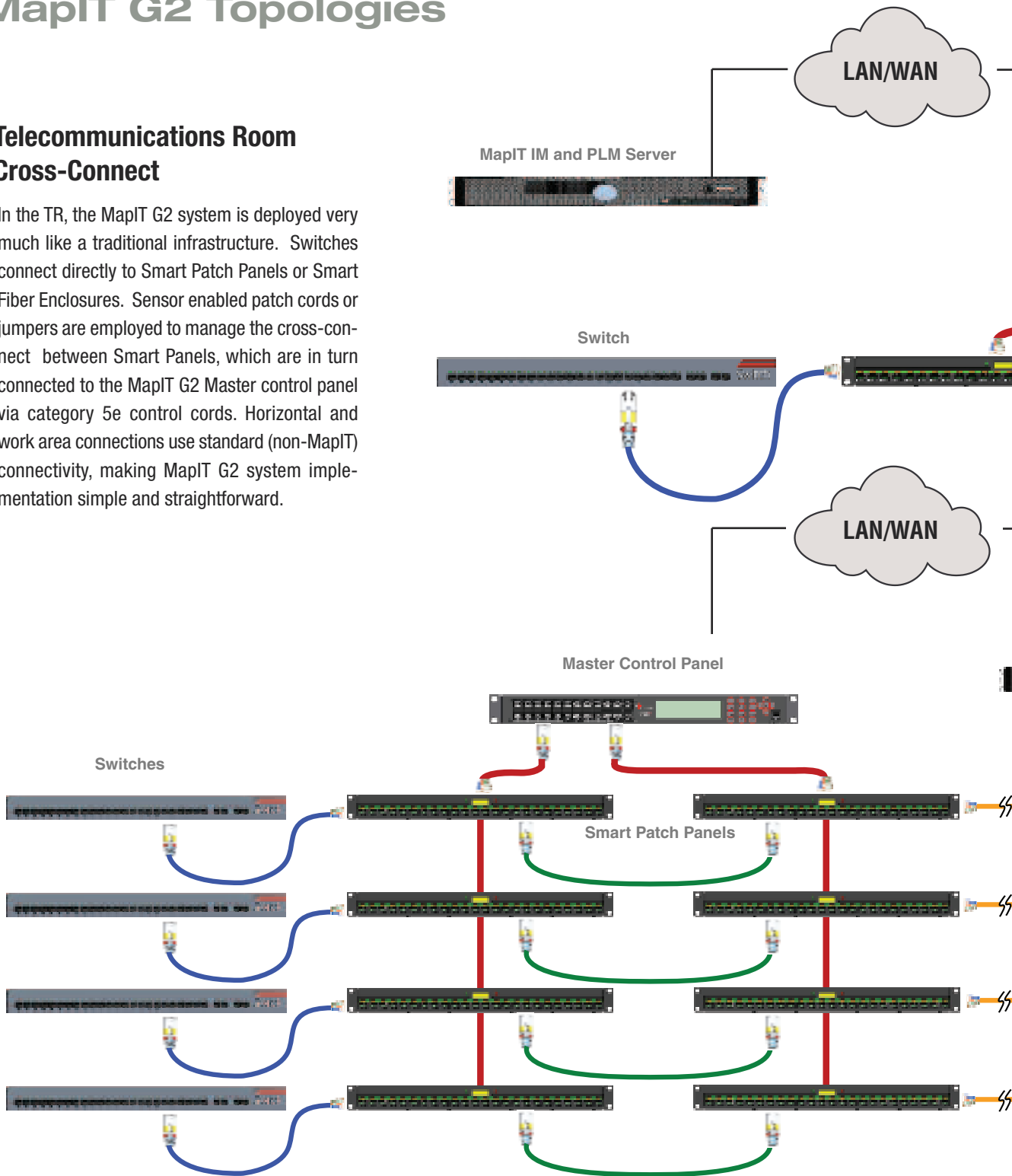
With intelligence built into the smart patch panels and fiber enclosures, there's no need to run individual cable from a central analyzer or scanner to each panel. This reduces the amount of pathway space required to connect the intelligent system. For example, in even a medium size closet with about 2,000 managed ports, the cable required to connect MapIT G2 components requires up to 76% less pathway space versus competing systems.

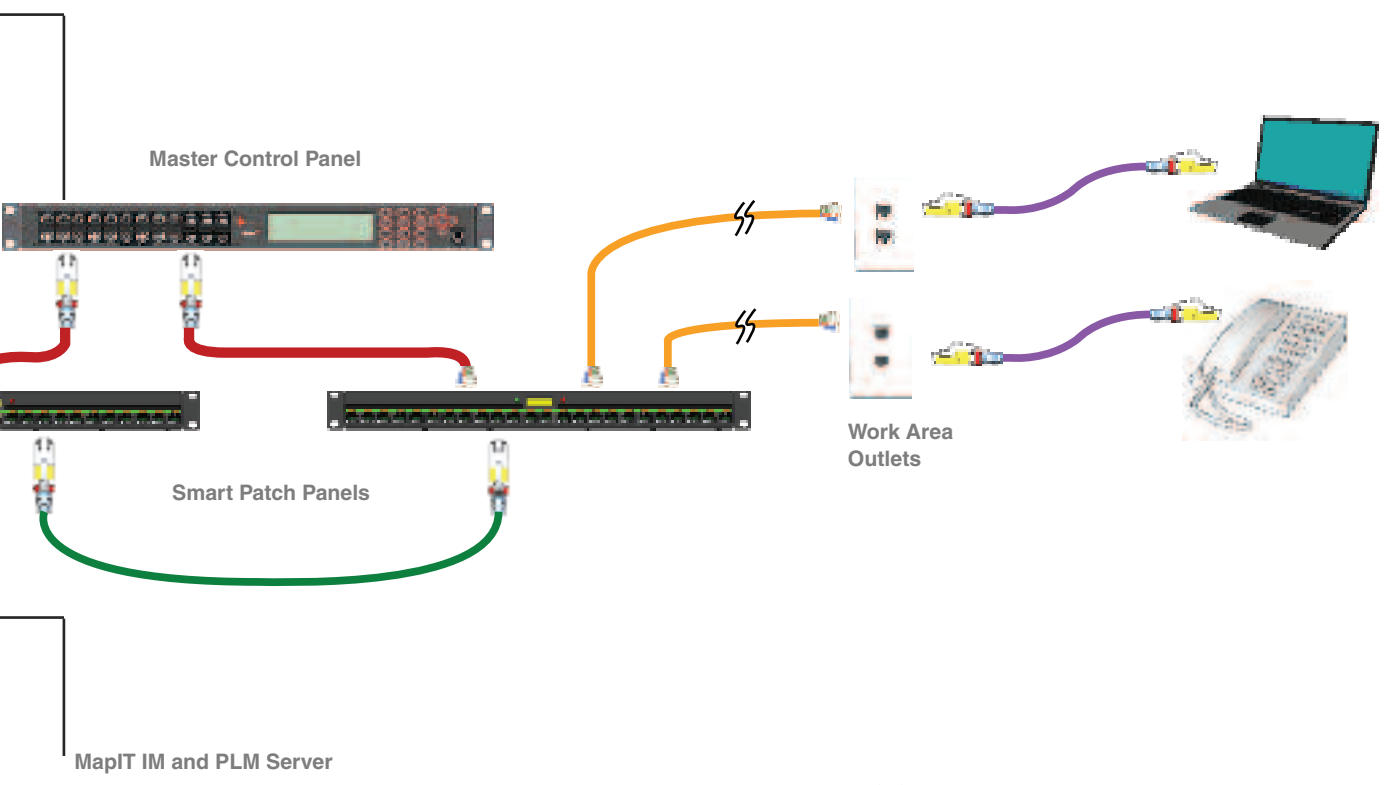


MapIT G2 Topologies

▶▶ Telecommunications Room Cross-Connect

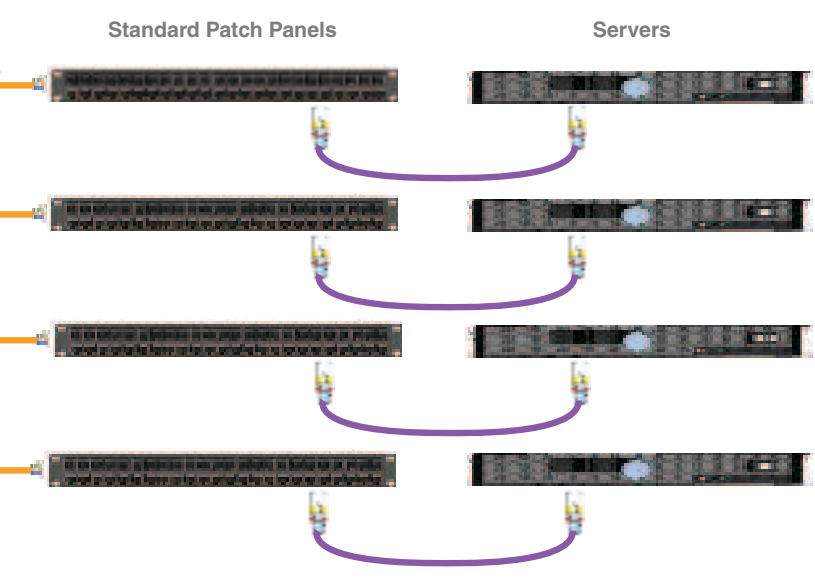
In the TR, the MapIT G2 system is deployed very much like a traditional infrastructure. Switches connect directly to Smart Patch Panels or Smart Fiber Enclosures. Sensor enabled patch cords or jumpers are employed to manage the cross-connect between Smart Panels, which are in turn connected to the MapIT G2 Master control panel via category 5e control cords. Horizontal and work area connections use standard (non-MapIT) connectivity, making MapIT G2 system implementation simple and straightforward.





◀◀ Data Center Cross-Connect

With the enhanced flexibility requirements of a data center, an additional layer of standard connectivity is added to the MapIT G2 system. As in the TR, switches are linked into the Smart Panel cross-connect. These Smart Panels are connected to the servers via standard horizontal cabling, patch panels and patch cords. This configuration allows MapIT G2 to monitor critical connections with a high degree of flexibility and scalability.



Legend:

- Solid IC Equipment Cord
- Sensor-Enabled MapIT G2 Patch Cord
- Category 5e Cable for Control Connection
- Horizontal Cable
- Standard Patch Cord

MapIT IM and PLM Software

MapIT IM and PLM software provides the critical central interface for the entire MapIT G2 system. This server-based software collects, monitors and stores network intelligence data from G2 smart panels and connectivity, delivering this information in a robust and user-friendly set of network management features.

This feature-rich software extends network resources, providing the same level of control to both centralized and remote sites from a single management point.

- **ASSET MANAGEMENT**
Real-time MapIT IM and PLM database stores status and location of all network assets to maximize utilization and efficiency.
- **ENHANCED SECURITY**
Software detects and records all physical layer activity and changes, providing instant alerts on unauthorized access or modification.
- **REMOTE MANAGEMENT**
Server-based software enables remote access to full functionality from any location - locally and globally.
- **STREAMLINED WORK ORDERS**
MapIT IM and PLM work order module assigns, directs and tracks work orders, ensuring accuracy, speed and documentation of activity.



SPP



MCP



IM AND PLM SOFTWARE

For more information on MapIT IM and PLM software, including system requirements, visit www.siemon.com/mapitg2

Note: MapIT G2 IM and PLM software port licenses are included with the purchase of MapIT G2 Smart Patch Panels and Smart Fiber Enclosures. See pages 9-10.

Visit <http://www.siemon.com/us/MapITG2/software-roadmap.asp> to view our Software Roadmap Notice

MapIT G2

Master and Distribution Control Panels

The MapIT G2 Master Control Panel (MCP) collects all network infrastructure data provided by the Smart Patch Panels and Fiber Enclosures, monitoring up to 2880 ports in just 1 rack mount space (1U). The MCP and DCP features an integrated LCD display and keypad, which provide technicians access to critical network architecture and diagnostic information. By providing this interactive interface locally within the patching zone, the MapIT G2 virtually eliminates the need for technicians to carry PDAs or directly access the MapIT software server. This user interface allows full end-to-end graphic circuit traces for any channel in the system and can perform diagnostic tasks on any component or port.



- **SUPERIOR DENSITY**
Low profile 1U design increases density and reduces usage of costly rack and cabinet space in data centers and telecommunication rooms
- **REDUCED POWER CONSUMPTION**
75% lower power consumption compared to traditional intelligent patching systems for monitoring equipment. This power savings decreases operating expenses and provides a more environmentally friendly solution
- **EXCELLENT THERMAL EFFICIENCY**
The MCP and DCP's combination of ultra low heat generation and a low profile design limits airflow impedance, helping to maximize cooling efficiency in data center environments
- **SIMPLE, MULTI-FUNCTIONAL USER INTERFACE**
Large graphic LCD and keypad enables technicians to view circuit traces, patch cord traces, perform diagnostics and more, improving efficiency in maintenance and MAC work
- **EASE OF IMPLEMENTATION**
Simple design and straightforward implementation and setup reduces the time and technician skill required to design and install the system



MCP Graphic LCD



Redundant power and Ethernet



Field-terminated control connections

Ordering Information

- M-MCP MapIT G2 Master Control Panel, 1U, black*
- M-DCP MapIT G2 Distribution Control Panel, 1U, black*

*Includes (1) probe pen, rear cable manager, cable ties, S310 termination caps and ground lug. Other accessories on back cover.

MapIT G2 Copper Systems

MapIT G2 Smart Patch Panels

The MapIT G2 Smart Patch Panel (SPP) is an industry first in intelligent infrastructure management. The panel features on-panel intelligence including a combination of LEDs and a backlit graphic LCD to guide technicians. The LCD can be used to display patch cord trace and diagnostic information. It can also be used to troubleshoot network issues, which can reduce downtime and increase productivity. Since it is actively connected to your database, you could even use it as a virtual label, dynamically displaying panel and port information directly from the MapIT G2 database.



MapIT G2 Patch Cords

These advanced cords feature a 9th wire and gold-plated sensor pin contained in a robust over-molded boot. This embedded sensor technology enables tracking of connections between Smart Patch Panel ports.



Ordering Information

MapIT G2 Smart Patch Panels

M-SPP-K24E MapIT G2 24-port modular Smart Patch Panel, accepts Siemon UTP or F/UTP keystone outlets (sold separately)
Includes (4) S110 termination caps, 24 cable ties and panel ground lug

24 MapIT IM or PLM software port licenses included with each panel (software details on page 7)

MapIT G2 Sensor-Enabled Copper Patch Cords:

M-10GMCS-(XX)M(XX)L Category 6A shielded, double-ended, stranded modular cord, color-matching boot, T568A/B, LSOH

	Jacket Color
Length	02 - White
01 - 1 meter (3.3 ft.)	04 - Grey
02 - 2 meter (6.6 ft.)	06 - Blue
03 - 3 meter (9.8 ft.)	
05 - 5 meter (16.4 ft.)	

M-MC6-(XX)-(XX) Category 6 UTP, double-ended, stranded modular cord, color-matching boot, T568A/B

	Jacket Color
Length	02 - White
03 - 0.91 meter (3 ft.)	04 - Grey
05 - 1.52 meter (5 ft.)	06 - Blue
07 - 2.13 meter (7 ft.)	
10 - 3.05 meter (10 ft.)	
15 - 4.57 meter (15 ft.)	
20 - 6.10 meter (20 ft.)	

M-10GMC-(XX)-(XX) Category 6A UTP, double-ended, stranded modular cord, color-matching boot, T568A/B, LSOH

	Jacket Color
Length	02 - White
03 - 0.91 meter (3 ft.)	04 - Grey
05 - 1.52 meter (5 ft.)	06 - Blue
07 - 2.13 meter (7 ft.)	
10 - 3.05 meter (10 ft.)	
15 - 4.57 meter (15 ft.)	
20 - 6.10 meter (20 ft.)	

Siemon Keystone Outlets

- Z6A-SK01 Keystone shielded Z-MAX™ 6A outlet, black*, T568A/B
- Z6A-K01 Keystone UTP Z-MAX 6A outlet, black*, T568A/B
- Z6-K01 Keystone UTP Z-MAX 6 outlet, black*, T568A/B

*Other colors available on request.

MapIT G2 Fiber Systems

MapIT G2 Smart Fiber Enclosure (SFE)

The MapIT G2 Smart Fiber Enclosure combines on-panel intelligence with robust MapIT connectivity and fiber management features for a best in-class intelligent fiber patching solution. An on-board LCD can be used to display patch cord traces and connectivity diagnostic information as well as troubleshoot network issues, which can reduce downtime and increase productivity by remotely guiding onsite technicians.



MapIT G2 XGLO® Jumpers

XGLO MapIT G2 jumpers are built to be the best. These assemblies are constructed with premium fiber that meets IEEE, IEC and TIA specifications for 10 Gigabit Ethernet serial transmission. These advanced cords feature patented MapIT G2 sensor technology – gold-plated sensor pins retained in robust molded connector clips.



Ordering Information

MapIT G2 Smart Fiber Enclosure

M-SFE-LC48-01 MapIT LC 48-fiber Smart Fiber Enclosure, black, multimode and singlemode cable compatible.
Cable ties, ground lug, fiber management clips, label holder and printable labels included

24 MapIT IM orPLM software port licenses included with each panel (software details on page 7)

MapIT G2 XGLO Multimode Duplex Jumpers:

M-J2-LCLC5L-(XX) LC-LC duplex jumper, MapIT XGLO 50/125 multimode fiber, aqua jacket, OFNR

Length

- 01** - 1 meter (3.3 ft.)
- 03** - 3 meter (9.8 ft.)
- 05** - 5 meter (16.4 ft.)

MapIT G2 XGLO® Singlemode Duplex Jumpers:

M-J2-LCULCUL-(XX) LC-LC duplex jumper, MapIT XGLO singlemode fiber, yellow jacket, OFNR

Length

- 01** - 1 meter (3.3 ft.)
- 03** - 3 meter (9.8 ft.)
- 05** - 5 meter (16.4 ft.)

ACCESSORIES

Power Supply

M-PS..... 6v, 3amp power supply, adapter/cord for MCP or DCP



Replacement Probe Pen

M-PEN..... MapIT probe pen, 7.62m (25 ft.) cord

Solid IC Cords

ZC6A-S(XX)(X)-(X)(X) Z-MAX 6A shielded (F/UTP) solid modular cord, blue jacket, clear boot

	Plugs	(Blank) - Single-ended D - Double-ended (T568A/B)
	Jacket Type	P - Plenum R - Riser
Length	Wiring	
10 - 10 ft.	A - T568B	
20 - 20 ft.	T - T568A	
30 - 30 ft.		
40 - 40 ft.		
50 - 50 ft.		
60 - 60 ft.		

ZC6A-(XX)(X)-(X)(X) Z-MAX 6A UTP, solid modular cord, blue jacket, clear boot

	Plugs	(Blank) - Single-ended D - Double-ended (T568A/B)
	Jacket Type	P - Plenum R - Riser
Length	Wiring	
10 - 10 ft.	A - T568B	
20 - 20 ft.	T - T568A	
30 - 30 ft.		
40 - 40 ft.		
50 - 50 ft.		
60 - 60 ft.		

IC6(X)-8(X)-(XX)-B(XX)(X) Category 6 UTP IC single-ended, solid modular cord

System	Jacket Type	
E - Premium 6 (Blank) - System 6	P - Plenum (Blue Jacket) (Blank) - Riser (Premium 6 - White Jacket, System 6 - Gray Jacket)	
Wiring	Length	Color
A - T568B	10 - 10 ft. 40 - 40 ft.	01 - Black 05 - Yellow
T - T568A	20 - 20 ft. 50 - 50 ft.	02 - White 06 - Blue
	30 - 30 ft. 60 - 60 ft.	03 - Red 07 - Green
		04 - Gray 09 - Orange

Category 5e Shielded Cable for Bus Connections

9A5R4-E1-06-RIA CMR, CSA FT4, riser, blue jacket, 305m (1000 ft.) Reel (US)

9A5R4-E2 CMR, CSA FT4, riser, blue jacket, 305m (1000 ft.) Reel-in-Box (International)



Shielded RJ-45 Plugs

PS-8-8 8-position shielded modular plug with 8 contacts (compatible with Siemon and Tyco crimp tools)



110 Patch Plugs

S110P4 4-pair, field-terminated S110 patch plug (colored icons not included)



LockIT™ RJ-45 Outlet Lock

LL-05 LockIT RJ45 Outlet Lock, bag of 10, includes 1 LockIT Universal Key



The Americas
Watertown, CT USA
Phone (1) 860 945 4200 US
Phone (1) 888 425 6165 Canada

Europe/Middle East/Africa
Surrey, England
Phone (44) 0 1932 571771

Asia/Pacific
Shanghai, P.R. China
Phone (86) 21 6390 6778

Central & South America
Bogota, Colombia
Phone (571) 317 2121

